

WAAS CH <b>90307</b> <b>W20A</b>	APP CRS <b>203°</b>	Rwy Idg TDZE Apt Elev	<b>5197</b> <b>827</b> <b>827</b>
--	------------------------	-----------------------------	---

RNAV (GPS) RWY 20

JOHN F KENNEDY MEMORIAL (ASX)

RNP APCH.

▼

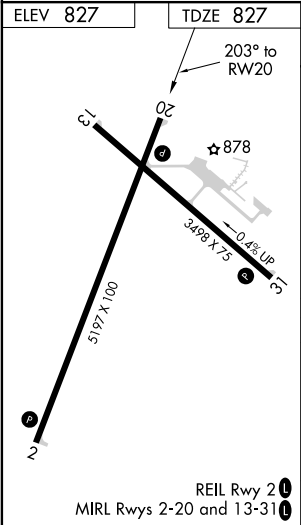
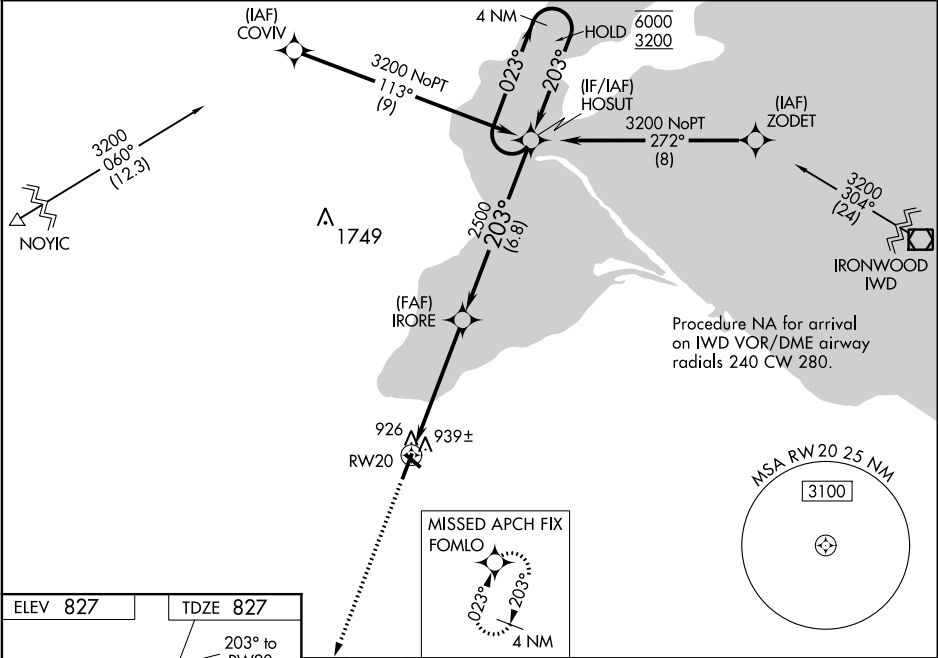
▲

⚡ -31°C

Baro-VNAV and VDP NA when using Ironwood altimeter setting. Rwy 20 helicopter visibility reduction below ¾ SM NA. For uncompensated Baro-VNAV systems, LNAV/VNAV NA below -22°C or above 54°C. When local altimeter setting not received, use Ironwood altimeter setting: increase LPV DA to 1260 feet and all visibilities ½ SM; increase LNAV/VNAV DA to 1256 feet and all visibilities ½ SM; increase all MDA 140 feet and LNAV visibility Cat C/D ¾ SM and Circling visibility Cat C/D ½ SM.

MISSED APPROACH:  
Climb to 3600 direct FOMLO and hold.

ASOS <b>126.775</b>	MINNEAPOLIS CENTER <b>126.45 276.4</b>	GCO <b>122.25</b>	UNICOM <b>122.8 (CTAF)</b>
------------------------	---	----------------------	-------------------------------



3600 FOMLO				
* LNAV only				
HOSUT Holding Pattern				
* 1.1 NM to RW20				
IRORE 2500				
RW20 2500				
1.1 NM 4.1 NM 6.8 NM				
CATEGORY	A	B	C	D
LPV DA		1128-1	301 (400-1)	
LNAV/VNAV DA		1124-1	297 (300-1)	
LNAV MDA		1200-1	373 (400-1)	
CIRCLING	1240-1 413 (500-1)	1280-1 453 (500-1)	1440-1¾ 613 (700-1¾)	1560-2¼ 733 (800-2¼)