

WAAS CH <b>72707</b> <b>W02A</b>	APP CRS <b>023°</b>	Rwy Idg TDZE Apt Elev	<b>5197</b> <b>826</b> <b>827</b>
----------------------------------------	------------------------	-----------------------------	-----------------------------------------

RNAV (GPS) RWY 2

JOHN F KENNEDY MEMORIAL (ASX)

RNP APCH.

▼

▲

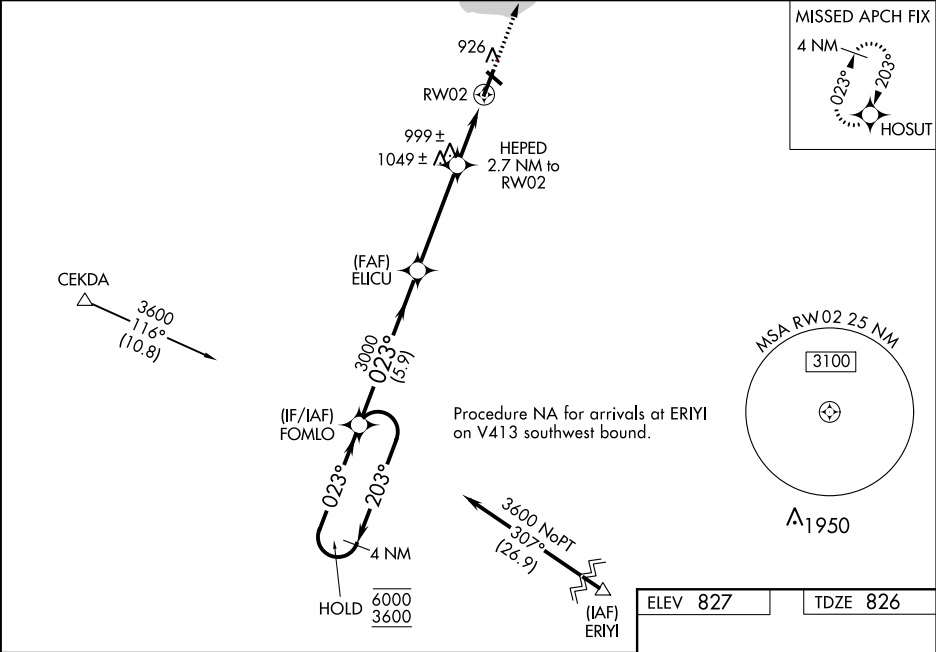
❄

-31°C

For uncompensated Baro-VNAV systems, LNAV/VNAV NA below -28°C or above 54°C.  
Rwy 2 helicopter visibility reduction below ¾ SM NA. Baro-VNAV and VDP NA when using Ironwood altimeter setting. When local altimeter setting not received, use Ironwood altimeter setting and increase all DA 132 feet and all MDAs 140 feet; increase LPV all Cats and LNAV Cat C/D visibility ¾ SM, LNAV/VNAV all Cats and Circling Cat C/D visibility ½ SM.

MISSED APPROACH:  
Climb to 3200 direct HOSUT and hold.

ASOS <b>126.775</b>	MINNEAPOLIS CENTER <b>126.45 276.4</b>	GCO <b>122.25</b>	UNICOM <b>122.8</b> (CTAF) <b>0</b>
------------------------	-------------------------------------------	----------------------	----------------------------------------



4 NM Holding Pattern		FOMLO	ELICU	HEPED 2.7 NM to RW02	3200 HOSUT
6000 ← 203° 3600 → 023°		023°	3000	*1.4 NM to RW02	*LNAV only
GP 3.00° TCH 41		3000	*1720	RW02	
		5.9 NM	4 NM	1.3	1.4
CATEGORY	A	B	C	D	
LPV DA	1076-1		250 (300-1)		
LNAV/VNAV DA	1103-1		277 (300-1)		
LNAV MDA	1300-1	474 (500-1)	1300-1¾	474 (500-1¾)	
CIRCLING	1300-1	473 (500-1)	1440-1¾ 613 (700-1¾)	1560-2¼ 733 (800-2¼)	

