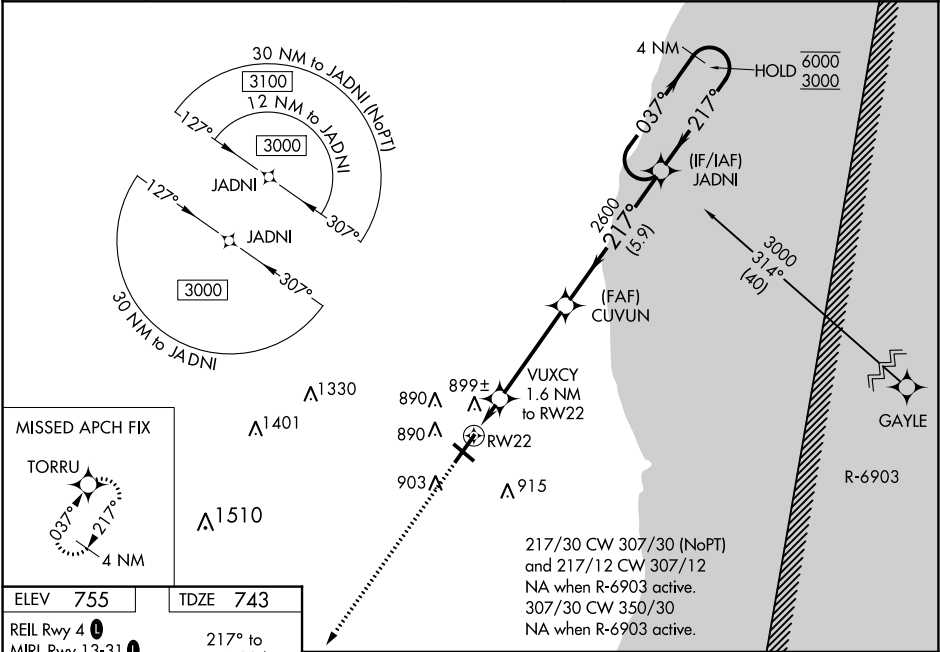


WAAS CH 65904 W22A	APP CRS 217°	Rwy Idg TDZE 6800 743 Apt Elev 755
--	------------------------	--

RNAV (GPS) RWY 22
SHEBOYGAN COUNTY MEMORIAL (SBM)

RNP APCH.		MALSR 	MISSED APPROACH: Climb to 3000 direct TORRU and hold.
 For uncompensated Baro-VNAV systems, LNAV/VNAV NA below -20°C or above 54°C. For inop ALS, increase LNAV Cat C/D visibility to 1½ SM.			

ASOS 118.425	MILWAUKEE APP CON 127.375 263.075	GCO 121.725	CLNC DEL 127.375	UNICOM 122.7 (CTAF) 0
------------------------	---	-----------------------	----------------------------	---------------------------------



ELEV 755 TDZE 743		4 NM Holding Pattern			
TORRU		JADNI			
*LNAV only		CUVUN			
RW22		VUXCY 1.6 NM to RW22			
1.6 NM		2600			
4.1 NM		217°			
5.9 NM		037°			
GP 3.00° TCH 50		6000/3000			
CATEGORY	A	B	C	D	
LPV DA	943-½		200 (200-½)		
LNAV/VNAV DA	1188-¾		445 (500-¾)		
LNAV MDA	1160-½	417 (500-½)	1160-¾	417 (500-¾)	
CIRCLING	1200-1 445 (500-1)	1220-1 465 (500-1)	1240-½ 485 (500-½)	1360-2 605 (700-2)	

EC-3, 31 DEC 2020 to 28 JAN 2021

EC-3, 31 DEC 2020 to 28 JAN 2021