

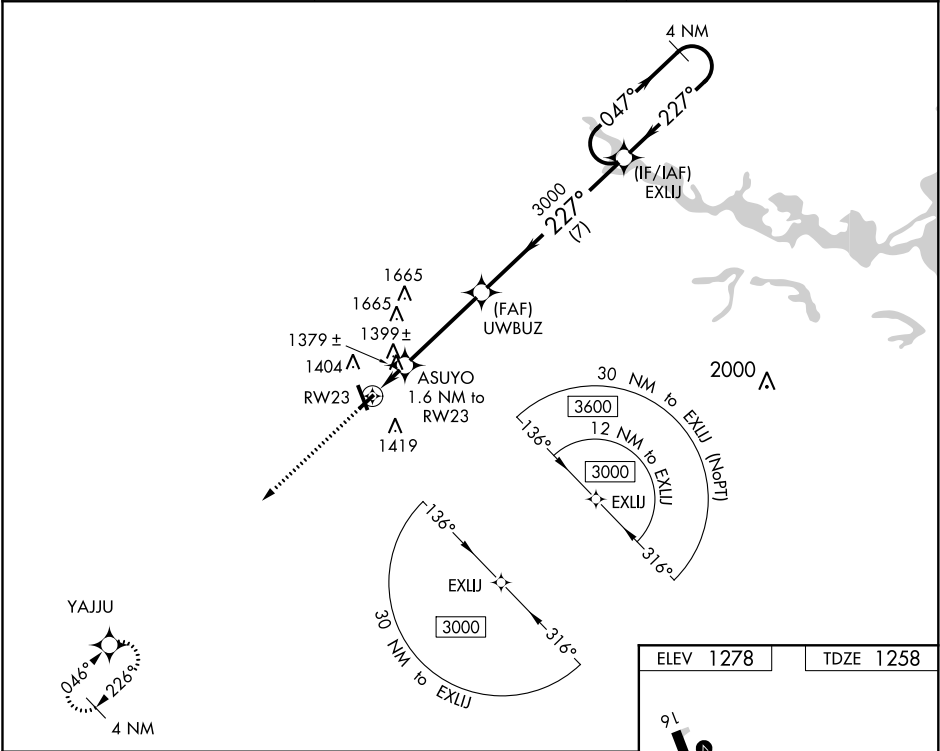
WAAS CH 70732 W23A	APP CRS 227°	Rwy Idg 3597 TDZE 1258 Apt Elev 1278
--	------------------------	---

RNAV (GPS) RWY 23

MARSHFIELD MUNI (MFI)

<div><div>▼</div><div>▲</div></div> <div>DME/DME RNP-0.3 NA. Helicopter visibility reduction below ¾ SM NA. When local altimeter setting not received, use Central Wisconsin altimeter setting and increase all MDA 60 feet, increase LP and LNAV visibility Cat C/D ¼ mile.</div>	MISSED APPROACH: Climb to 3000 direct YAJJU and hold.
--	--

ASOS 121.575	MINNEAPOLIS CENTER 124.4 317.7	UNICOM 123.0 (CTAF) 0
------------------------	--	---------------------------------



3000	YAJJU	UWBZ	EXLJ	4 NM Holding Pattern
ASUYO 1.6 NM to RW23	3000	227°	047°	3000
RW23	1760	3000	227°	3000
1.6 NM	3.8 NM	7 NM		
CATEGORY	A	B	C	D
LP MDA	1640-1	382 (400-1)	1640-1½	382 (400-1½)
LNAV MDA	1660-1	402 (400-1)	1660-1½	402 (400-1½)
CIRCLING	1760-1	482 (500-1)	2020-2¼ 742 (800-2¼)	2020-2½ 742 (800-2½)

