

WAAS CH <b>82332</b> <b>W36A</b>	APP CRS <b>001°</b>	Rwy Idg <b>4098</b> TDZE <b>572</b> Apt Elev <b>573</b>
--	------------------------	---

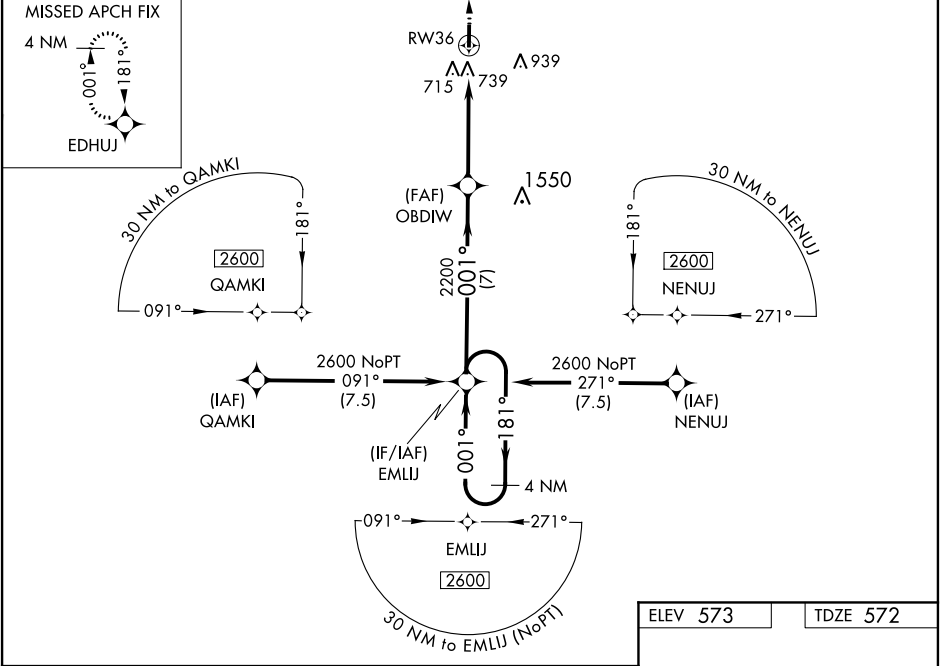
RNAV (GPS) RWY 36

SALEM-LECKRONE (SLO)

▼ Baro-VNAV NA when using Centralia altimeter setting. For uncompensated Baro-VNAV systems, LNAV/VNAV NA below -21°C (-5°F) or above 54°C (130°F). When local altimeter setting not received, use Centralia altimeter setting and increase all DA 28 feet and all MDA 40 feet; increase LPV all Cats visibility ¼ mile, Circling Cat D visibility ¼ mile. Procedure NA at night. DME/DME RNP-0.3 NA. Helicopter visibility reduction below 1 SM NA.

MISSED APPROACH: Climb to 2600 direct EDHUJ and hold.

AWOS-3 <b>118.525</b>	KANSAS CITY CENTER <b>127.7 351.825</b>	UNICOM <b>122.8 (CTAF) 0</b>
--------------------------	--	---------------------------------

ELEV 573  
TDZE 572