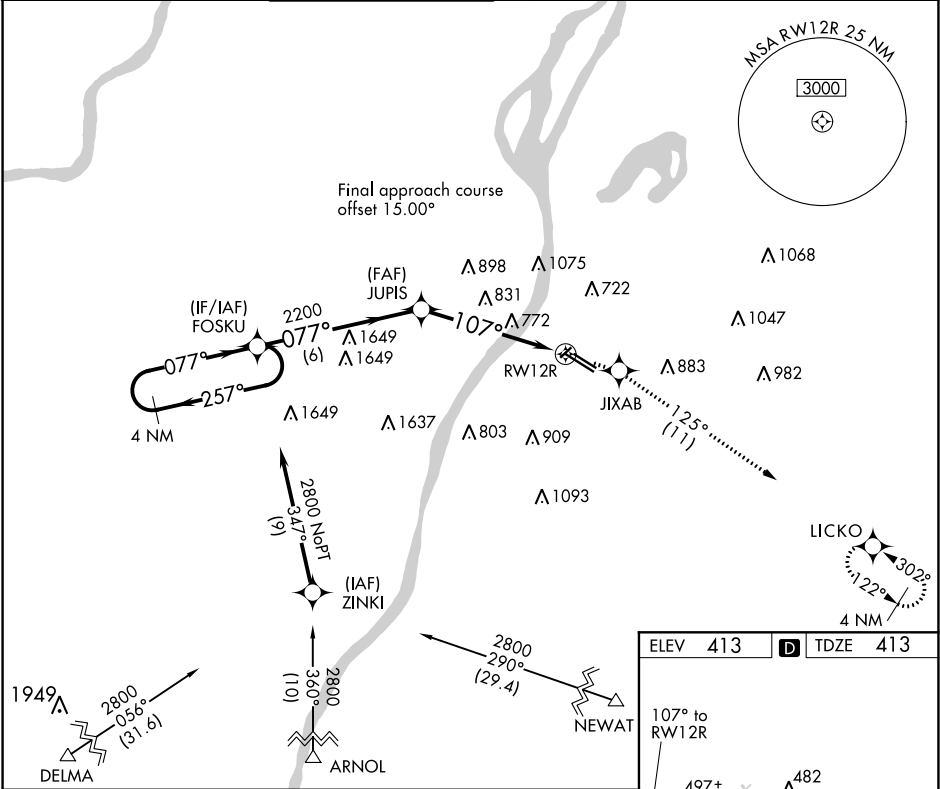


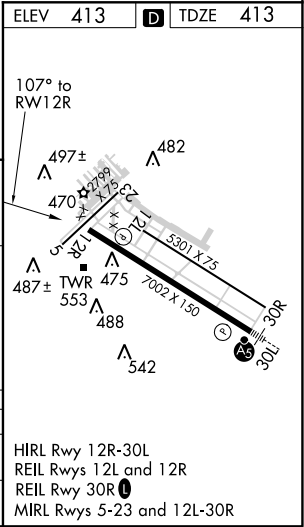
|         |          |      |
|---------|----------|------|
| APP CRS | Rwy Idg  | 7002 |
| 107°    | TDZE     | 413  |
|         | Apt Elev | 413  |

RNAV (GPS) RWY 12R  
ST LOUIS DOWNTOWN (CPS)

|  |                                   |  |                  |                     |   |                  |
|--|-----------------------------------|--|------------------|---------------------|---|------------------|
| RNP APCH.  |                                   |  |                  |                     | MISSED APPROACH: Climb to 2200 direct JIXAB and right turn on 125° track to LICKO and hold. |                  |
| ▼<br>▲ When local altimeter setting not received, use St Louis Lambert Intl altimeter setting and increase all MDAs 80 feet and visibility Cats B/C/D ¼ SM. Circling Rwy 5 NA at night. Rwy 12R helicopter visibility reduction below ¾ SM NA. |                                   |  |                  |                     |   |                  |
|  |                                   |  |                  |                     |   |                  |
| ATIS<br>121.45   | ST LOUIS APP CON<br>123.7 371.875 | DOWNTOWN TOWER ★<br>119.925 (CTAF) 0 379.3 | GND CON<br>121.8 | CLNC DEL<br>118.275 | CLNC DEL<br>121.8<br>(when twr closed)  | UNICOM<br>122.95 |



|  |        |                 |                    |                      |
|--|--------|-----------------|--------------------|----------------------|
| 4 NM Holding Pattern                                       |        | 2200 JIXAB      |                    | LICKO                |
| 2800 ← 257° 077° →   |        | JUPIS           |                    | tr 125°              |
| VDP NA when using St Louis Lambert Intl altimeter setting. |        | 2.1 NM to RW12R |                    | RW12R                |
| 6 NM   |        | 3.03°           | 107°               | TCH 50               |
| 3.3 NM   |        | 2.1 NM          |                    |                      |
| CATEGORY   | A      | B               | C                  | D                    |
| LNAV MDA   | 1140-1 | 727 (800-1)     | 1140-2 727 (800-2) | 1140-2¼ 727 (800-2¼) |
| CIRCLING   | 1140-1 | 727 (800-1)     | 1140-2 727 (800-2) | 1140-2¼ 727 (800-2¼) |



EC-3, 31 DEC 2020 to 28 JAN 2021

EC-3, 31 DEC 2020 to 28 JAN 2021