

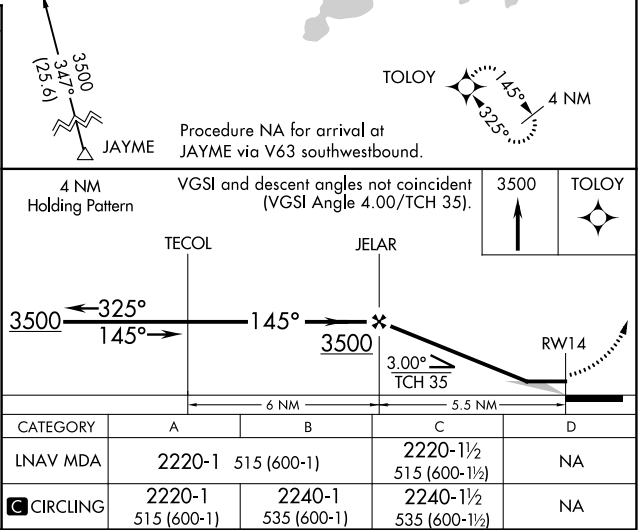
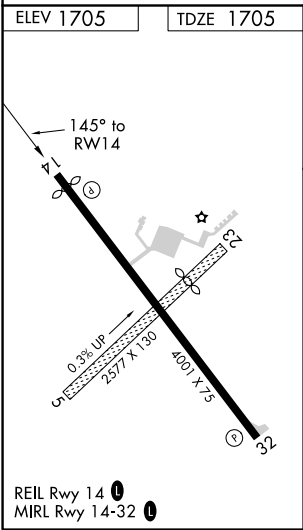
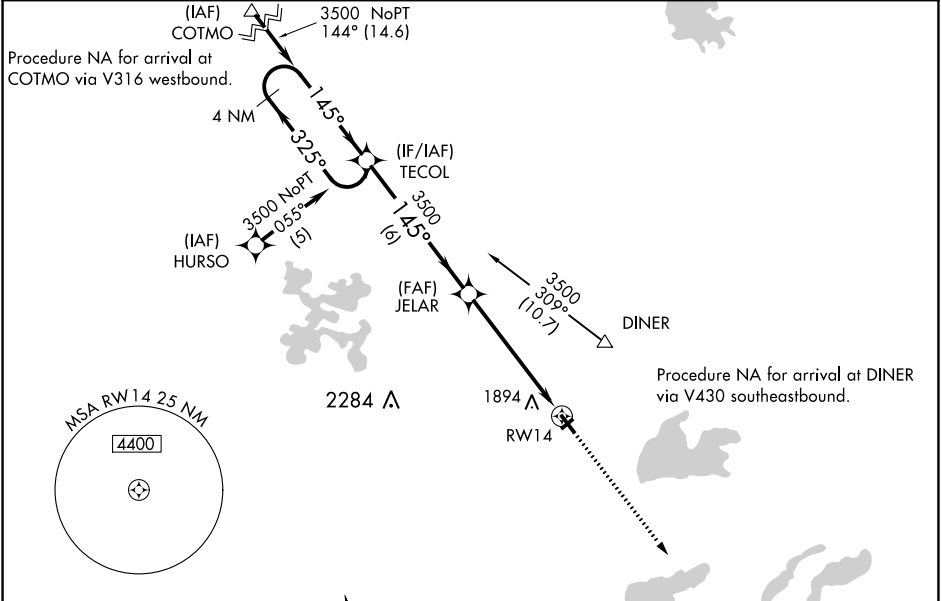
APP CRS	Rwy Idg	3802 (day)
145°	TDZE	3601 (night)
	Apt Elev	1705
		1705

RNAV (GPS) RWY 14
KINGS LAND O'LAKES (LNL)

If local altimeter setting not received, use Eagle River Union altimeter setting and increase all MDAs 40 feet. Helicopter visibility reduction below 1 SM NA. Circling Rwy 32 NA at night. Circling NA to Rwys 5 and 23. DME/DME RNP- 0.3 NA.

MISSED APPROACH: Climb to 3500 direct TOLOY and hold.

AWOS-3 119.525	MINNEAPOLIS CENTER 133.65 281.5	UNICOM 122.8 (CTAF) 0
-------------------	------------------------------------	--------------------------



EC-3, 31 DEC 2020 to 28 JAN 2021

EC-3, 31 DEC 2020 to 28 JAN 2021