

WAAS CH 69509 W27A	APP CRS 275°	Rwy Idg 5108 TDZE 455 Apt Elev 461
--	------------------------	---

RNAV (GPS) RWY 27

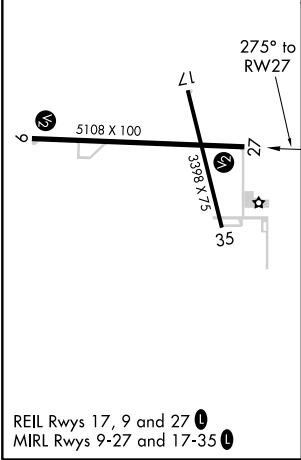
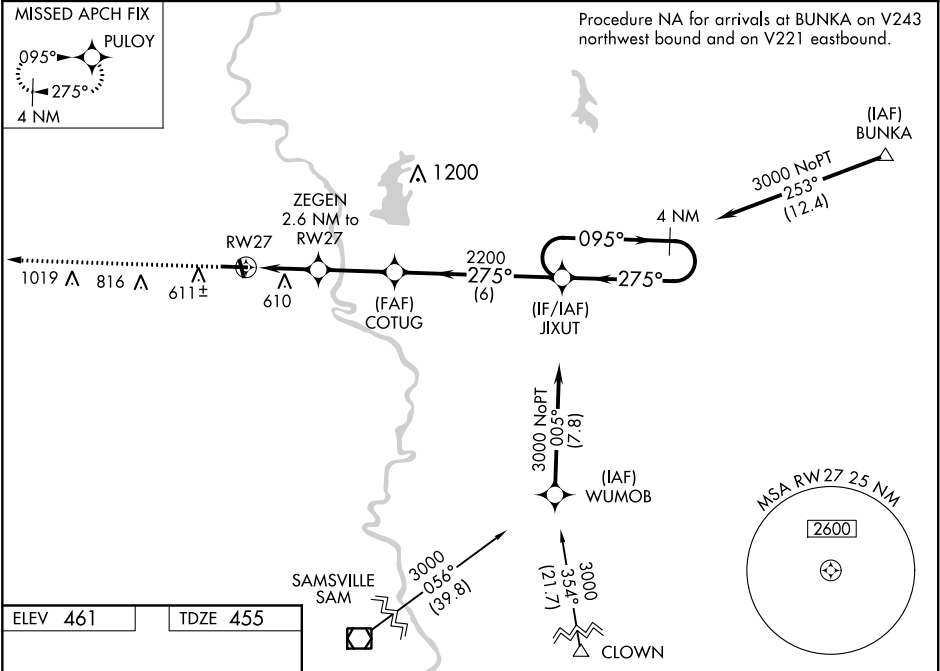
CRAWFORD CO (RSV)



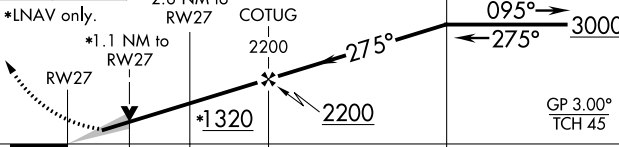

▼ For uncompensated Baro-VNAV systems, LNAV/VNAV NA below -15°C (5°F) or above 54°C (130°F).

▲ DME/DME RNP-0.3 NA. When local altimeter setting not received, use Terre Haute Rgnl altimeter setting and increase all DA 89 feet and all MDA 100 feet; increase LPV all Cats visibility 1/8 mile, increase LNAV/VNAV all Cats visibility 3/8 mile, increase LNAV Cats C/D 1/4 mile and increase Circling Cats C/D 1/2 mile. Baro-VNAV and VDP NA when using Terre Haute Rgnl altimeter setting.

MISSED APPROACH: Climb to 3000 direct PULLOY and hold.

AWOS-3 120.50	HULMAN APP CON 119.25 339.8	UNICOM 123.0 (CTAF) 0
-------------------------	---------------------------------------	---------------------------------



3000	PULOY	VGSI and RNAV glidepath not coincident (VGSI Angle 3.00/TCH 25).		4 NM Holding Pattern
		ZEGEN 2.6 NM to RW27	COTUG 2200	JIXUT
				
*LNAV only.				
*1.1 NM to RW27				
*1320				
2200				
GP 3.00° TCH 45				
1.1 NM 1.5 NM 2.7 NM 6 NM				
CATEGORY	A	B	C	D
LPV DA	705-1 250 (300-1)			
LNAV/ VNAV DA	845-1¼ 390 (400-1¼)			
LNAV MDA	840-1 385 (400-1)		840-1⅛ 385 (400-1⅛)	
 CIRCLING	940-1 479 (500-1)	1080-1 619 (700-1)	1120-1¾ 659 (700-1¾)	1180-2¼ 719 (800-2¼)