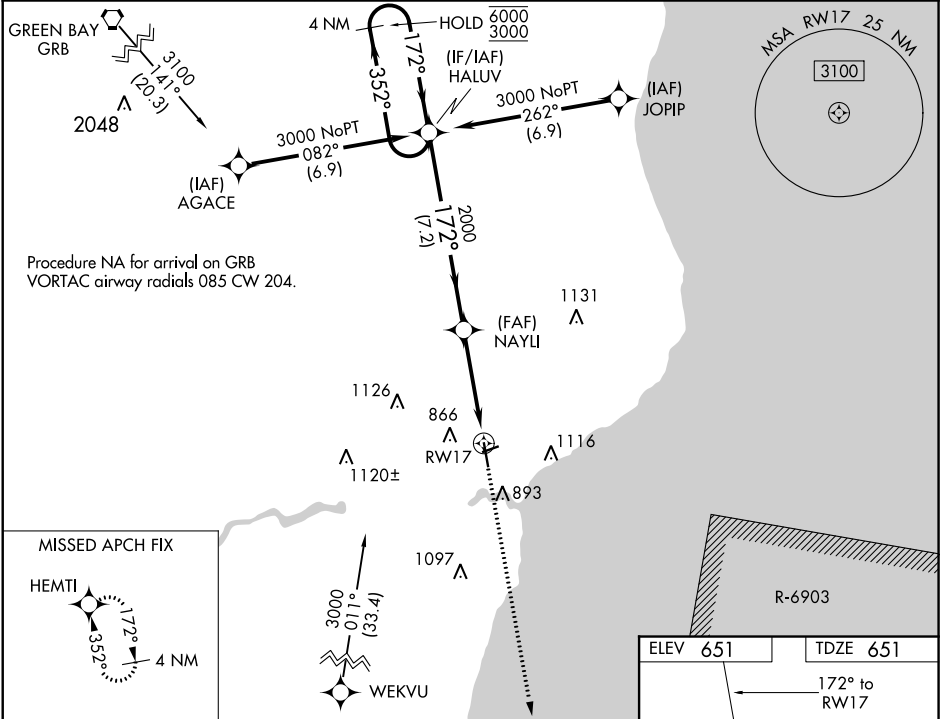


WAAS CH <b>63111</b> <b>W17A</b>	APP CRS <b>172°</b>	Rwy Idg TDZE Apt Elev	<b>5001</b> <b>651</b> <b>651</b>
--	------------------------	-----------------------------	---

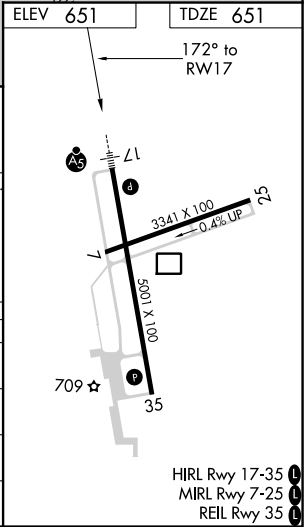
RNAV (GPS) RWY 17  
MANITOWOC COUNTY (MTW)

RNP APCH.  ▼ For uncompensated Baro-VNAV systems, LNAV/VNAV NA below -16°C or above 54°C. For inop ALS, increase LNAV/VNAV all Cats visibility to 7/8 SM. ▲	MALSR 	MISSED APPROACH: Climb to 3000 direct HEMTI and hold.
--	-----------	---

AWOS-3PT <b>123.775</b>	GREEN BAY APP CON ★ <b>120.2 338.2</b>	UNICOM <b>122.8 (CTAF)</b>
----------------------------	---	-------------------------------



4 NM Holding Pattern HALUV				
6000 ← 352° 3000 → 172°				
GP 3.00° TCH 44				
2000				
7.2 NM 2.6 NM 1.5 NM				
CATEGORY	A	B	C	D
LPV DA	851-½		200 (200-½)	
LNAV/VNAV DA	942-½		291 (300-½)	
LNAV MDA	1180-½ 529 (600-½)		1180-1 529 (600-1)	
CIRCLING	1200-1 549 (600-1)		1420-2¼ 769 (800-2¼) 1480-2¾ 829 (900-2¾)	



EC-3, 31 DEC 2020 to 28 JAN 2021

EC-3, 31 DEC 2020 to 28 JAN 2021