

WAAS CH 82716 W12A	APP CRS 118°	Rwy Idg TDZE Apt Elev	6501 918 918
--	------------------------	-----------------------------	---

RNAV (GPS) RWY 12

APPLETON INTL (ATW)

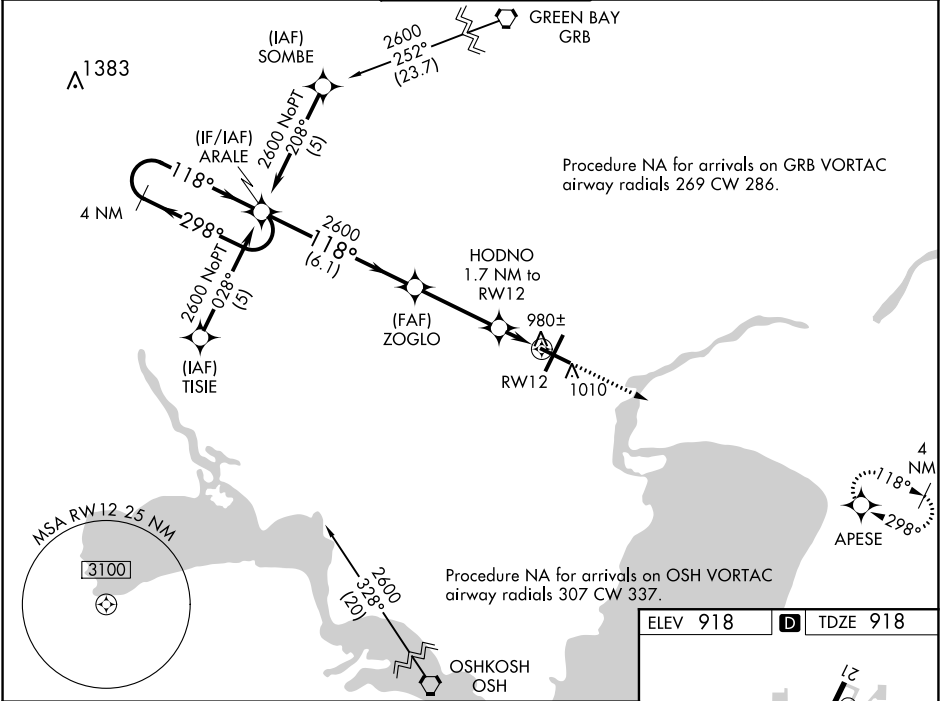
▼

▲

For uncompensated Baro-VNAV systems, LNAV/VNAV NA below -16°C (4°F) or above 47°C (116°F). DME/DME RNP-0.3 NA. When local altimeter not received, use Green Bay-Austin Straubel Intl altimeter setting and increase call DA 81 feet and all MDA 100 feet. Increase LPV and LNAV/VNAV all Cats and LNAV Cat C/D visibility ½ mile. Baro-VNAV and VDP NA when using Green Bay-Austin Straubel altimeter setting.

MISSED APPROACH:
Climb to 2700 direct APESE and hold.

ATIS 127.15	GREEN BAY APP CON★ 126.3 338.2	APPLETON TOWER★ 119.6 (CTAF) 0	GND CON 121.7	UNICOM 122.95
-----------------------	--	--	-------------------------	-------------------------



4 NM Holding Pattern		VGSI and RNAV glidepath not coincident (VGSI Angle 3.00/TCH 35).		2700	APESE
ARALE		ZOGLO		HODNO 1.7 NM to RW12	*LNAV only
2600 ← 298°		2600		*0.9 NM to RW12	
118° →		118°		RW12	
GP 3.00°		*1500			
TCH 50					
← 6.1 NM		← 3.4 NM		← 0.8	
← 0.9					
CATEGORY	A	B	C	D	
LPV DA		1118-¾	200 (200-¾)		
LNAV/ VNAV DA		1329-1½	411 (500-1½)		
LNAV MDA		1240-1	322 (400-1)		
CIRCLING	1340-1 422 (500-1)	1380-1 462 (500-1)	1400-1½ 482 (500-1½)	1480-2 562 (600-2)	

