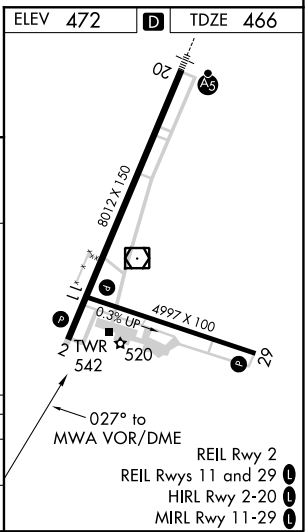
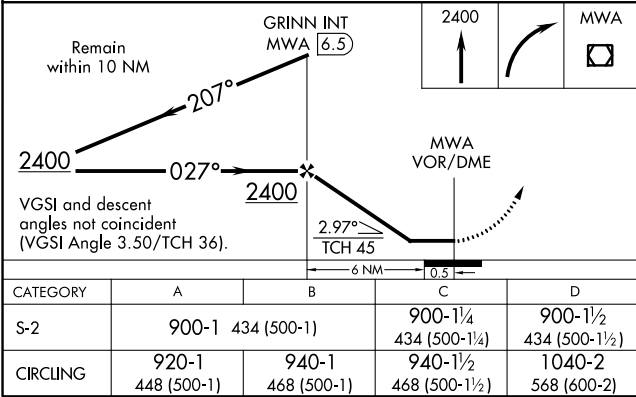
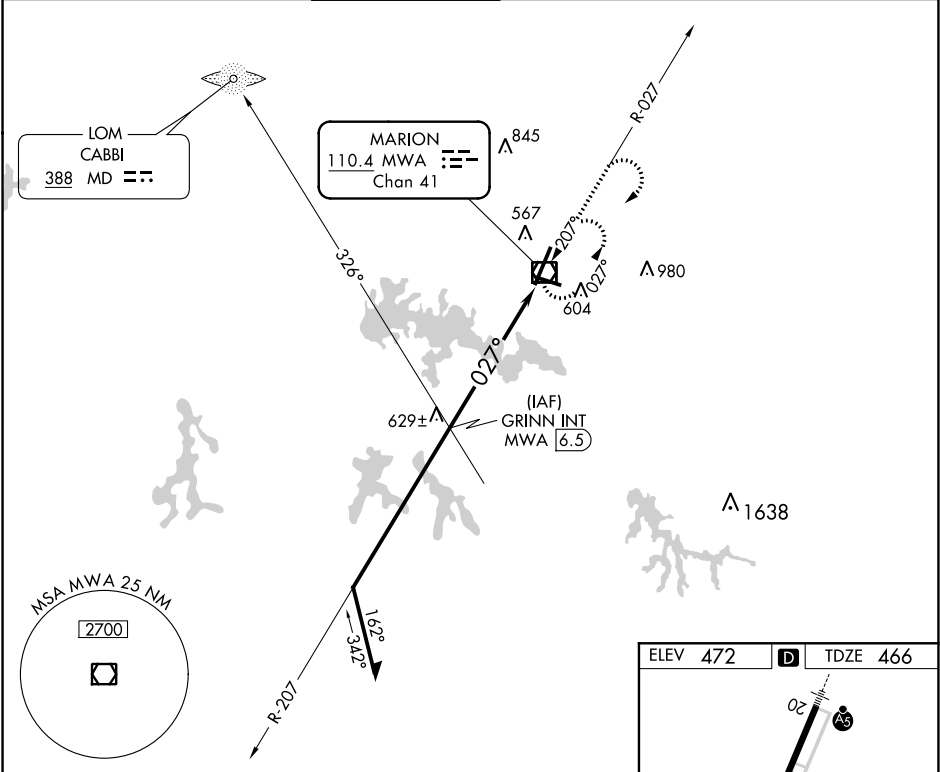


VOR/DME MWA <b>110.4</b> Chan <b>41</b>	APP CRS <b>027°</b>	Rwy Idg <b>8012</b> TDZE <b>466</b> Apt Elev <b>472</b>
---	------------------------	---

VOR RWY 2

VETERANS AIRPORT OF SOUTHERN ILLINOIS (MWA)

ADF or DME required. Circling Rwy 11 NA at night. Helicopter visibility reduction below ¾ SM NA. If local altimeter setting not received, use Carbondale-Murphysboro altimeter setting and increase all MDAs 40 feet.			MISSED APPROACH: Climb to 2400 then right turn direct MWA VOR/DME and hold.		
AWOS-3 <b>119.675</b>	KANSAS CITY CENTER <b>127.475 346.275</b>	MARION TOWER ★ <b>128.4</b> (CTAF) <b>0</b>	CLNC DEL <b>127.475</b> (When twr closed)	GND CON <b>121.7</b>	UNICOM <b>122.95</b>



EC-3, 31 DEC 2020 to 28 JAN 2021

EC-3, 31 DEC 2020 to 28 JAN 2021