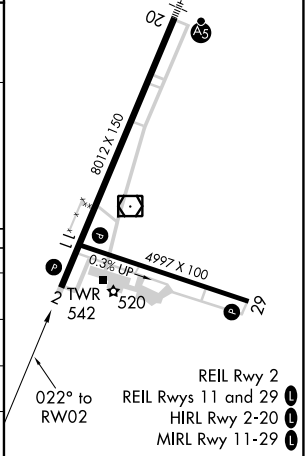
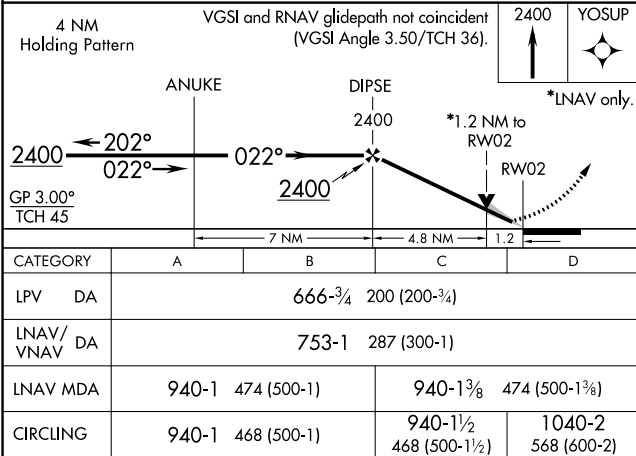
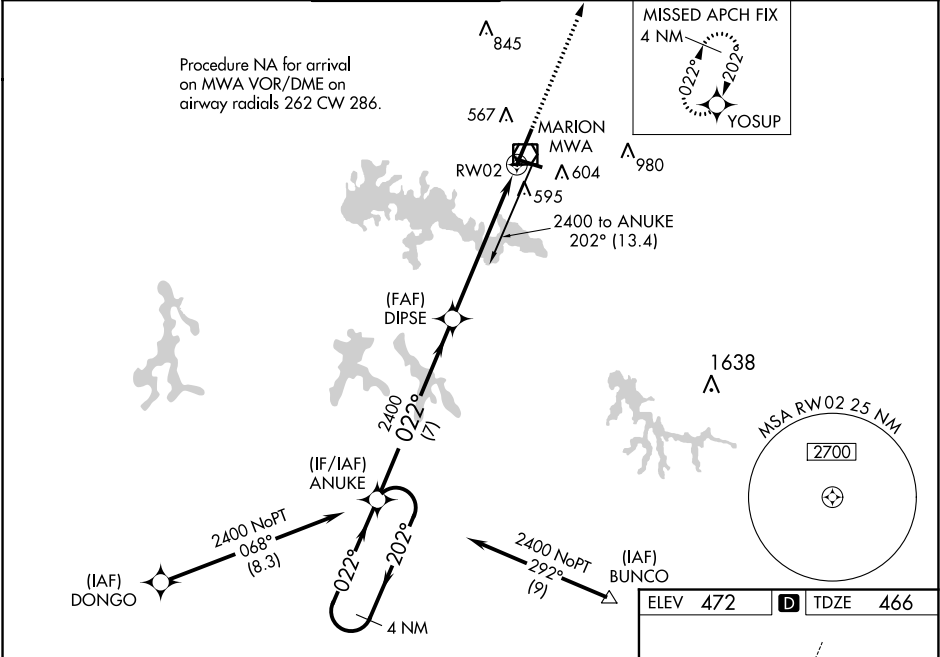


WAAS CH 61230 W02A	APP CRS 022°	Rwy Idg TDZE 466 Apt Elev 472
--	------------------------	---

RNAV (GPS) RWY 2

VETERANS AIRPORT OF SOUTHERN ILLINOIS (MWA)

<div><div><div></div><div></div></div><div>For uncompensated Baro-VNAV systems, LNAV/VNAV NA below -15°C (5°F) or above 54°C (130°F). DME/DME RNP-0.3 NA. When local altimeter setting not received, use Carbondale/Murphysboro altimeter setting and increase all DA/MDA 40 feet, and increase LNAV/VNAV all Cats and LNAV Cat C and D visibility ½ mile. Baro-VNAV and VDP NA when using Carbondale/Murphysboro altimeter setting. Circling Rwy 11 NA at night.</div></div>				MISSED APPROACH: Climb to 2400 direct YOSUP and hold.	
AWOS-3 119.675	KANSAS CITY CENTER 127.475 346.275	MARION TOWER★ 128.4 (CTAF) 0	CLNC DEL 127.475 (When twr closed)	GND CON 121.7	UNICOM 122.95



EC-3, 31 DEC 2020 to 28 JAN 2021

EC-3, 31 DEC 2020 to 28 JAN 2021