

ILS or LOC RWY 20
VETERANS AIRPORT OF SOUTHERN ILLINOIS (MWA)

MALSR

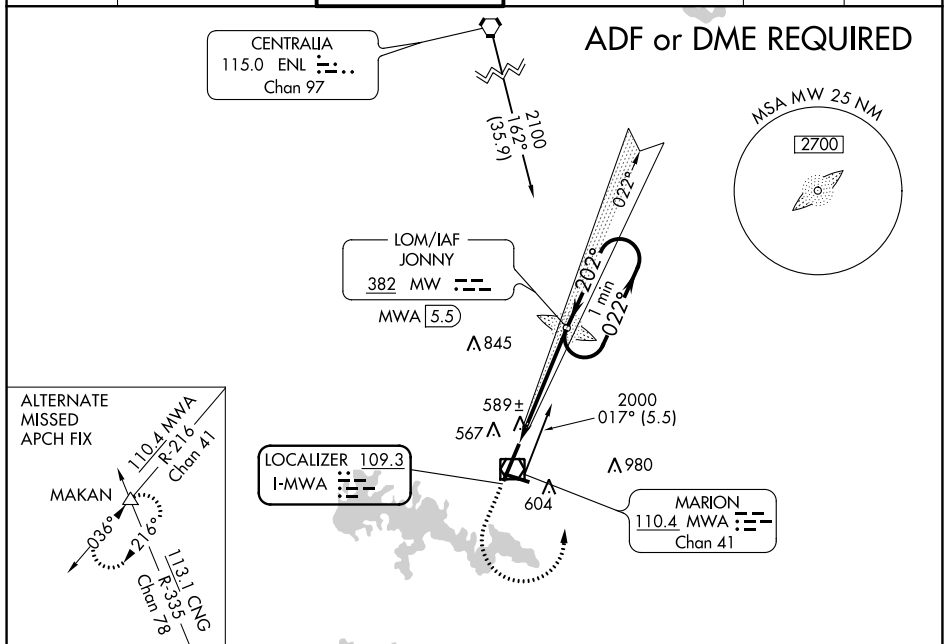
A5

1

MISSED APPROACH: Climb to 1500 then climbing left turn to 2000 direct JONNY LOM/MWA 5.5 DME and hold.

AWOS-3 119.675	KANSAS CITY CENTER 127.475 346.275	MARION TOWER★ 128.4 (CTAF) 0	CLNC DEL 127.475 (When twr closed)	GND CON 121.7	UNICOM 122.95
--------------------------	--	--	--	-------------------------	-------------------------

ADF or DME REQUIRED



ELEV 472 **D** TDZE 468

HIRL Rwy 2-20 (L)
MIRL Rwy 11-29 (L)
REIL Rwy 2
REIL Rwys 11 and 29 (L)

202°
4.6 NM
from FAF

8012 x 130
4997 x 100
0.32 Up

2 TWR 542
520

FAF to MAP 4.6 NM

Knots	60	90	120	150	180
Min:Sec	4:36	3:04	2:18	1:50	1:32

