

LOC I-GBG	APP CRS	Rwy Idg	5792
110.7	025°	TDZE	764
		Apt Elev	764

ILS or LOC/DME RWY 3

GALESBURG MUNI (GBG)

NA

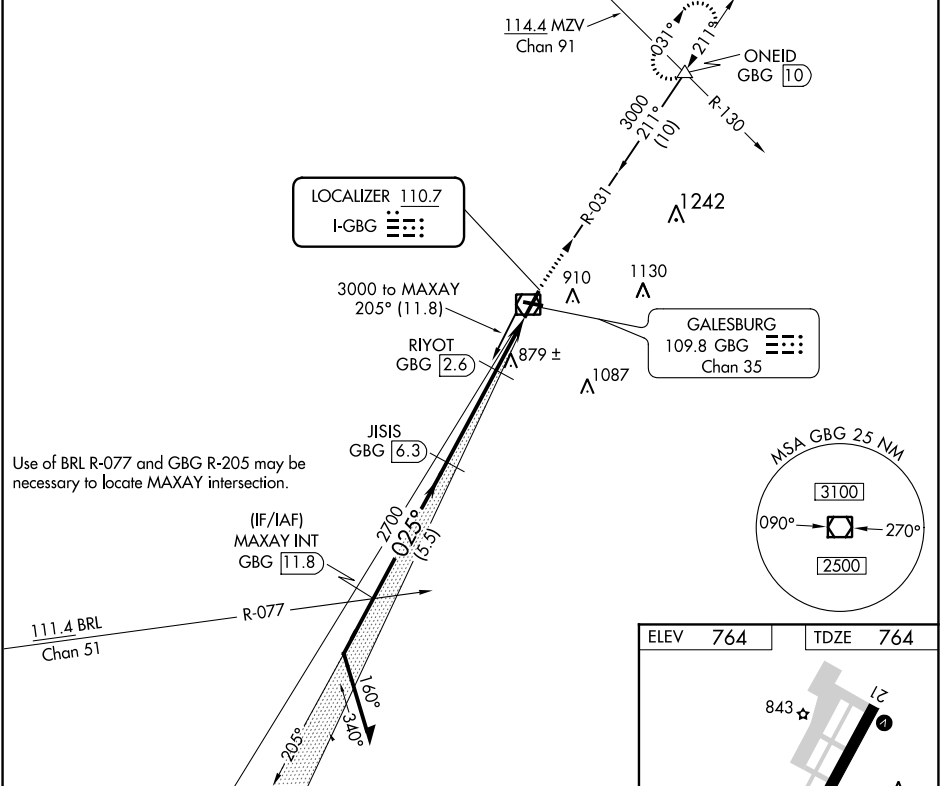
For Circling to Rwy 10 NA at night. For inoperative ALS, increase S-LOC 3 Cat C/D visibility to 1 1/8 SM. For inoperative ALS when using Macomb altimeter setting, increase S-ILS 3 all Cats visibility to 3/8 SM, increase S-LOC 3 Cat C/D visibility to 1 3/8 SM. When local altimeter setting not received, use Macomb altimeter setting and increase all DA 71 feet, and all MDA 80 feet, increase S-LOC 3 Cat C/D to 1.

MALSR

MISSED APPROACH:

Climb to 3000 on GBG VOR/DME R-031 to ONEID INT/GBG 10 DME and hold.

AWOS-3	QUAD CITY APP CON ★	CLNC DEL	UNICOM
118.975	133.275 257.8	120.7	123.0 (CTAF) 0



Remain within 10 NM				
3000 205° 025° 3000 205° 2700 1500				
GS 3.00° TCH 55				
5.5 NM 3.7 NM 2.2 NM				
CATEGORY	A	B	C	D
S-ILS 3	964-1/2 200 (200-1/2)			
S-LOC 3	1160-1/2	396 (400-1/2)	1160-3/4	396 (400-3/4)
CIRCLING	1220-1	456 (500-1)	1220-1/2	1340-2
			456 (500-1/2)	576 (600-2)

