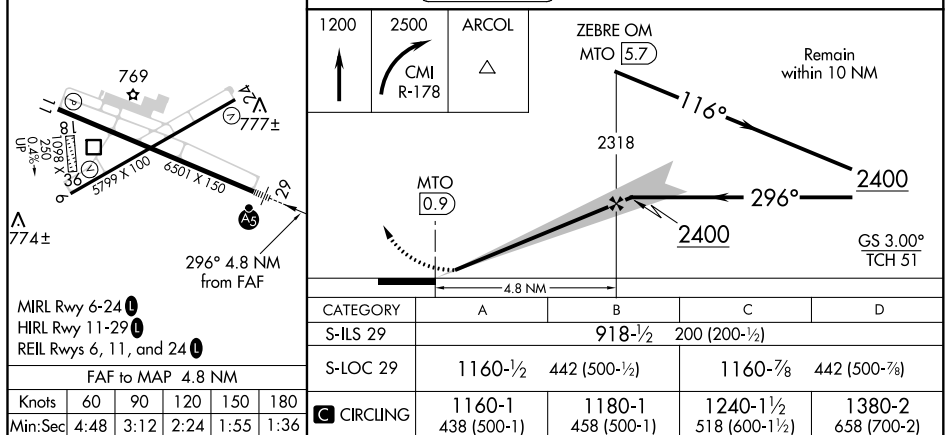
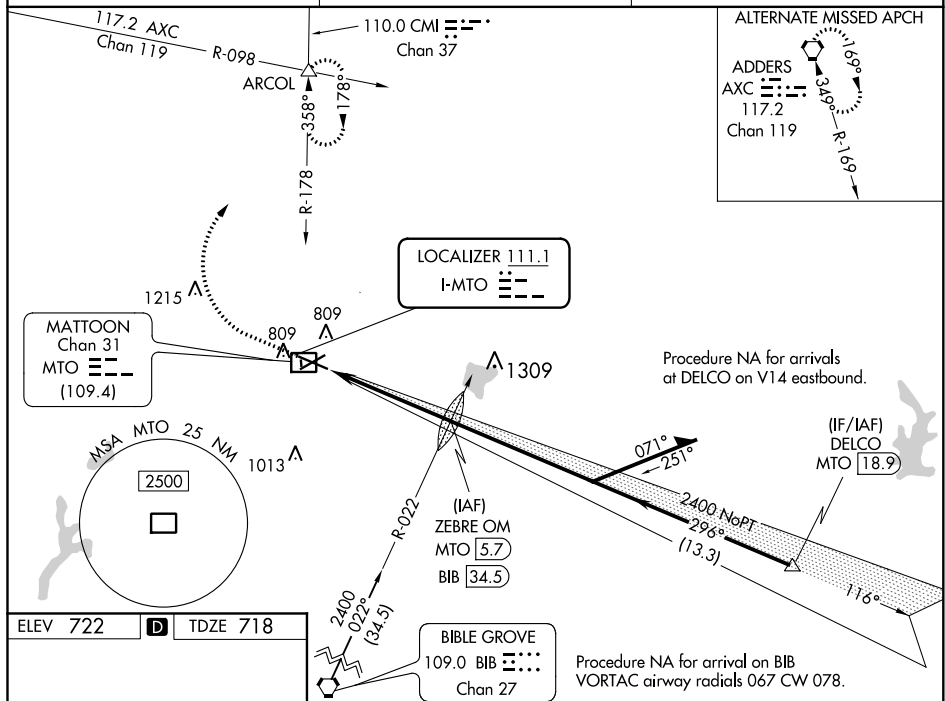


ILS or LOC RWY 29  
COLES COUNTY MEMORIAL (MTO)

**MISSED APPROACH:** Climb to 1200 then climbing right turn to 2500 on CMI R-178 to ARCOI INT and hold

**T** DME from MTO DME. Simultaneous reception of I-MTO and  
**A** NA MTO DME required. Circling NA to Rwy 18 and 36.

UNICOM  
122.7 (CTAF) 

COLES COUNTY MEMORIAL (MTO)

ILS or LOC RWY 29