

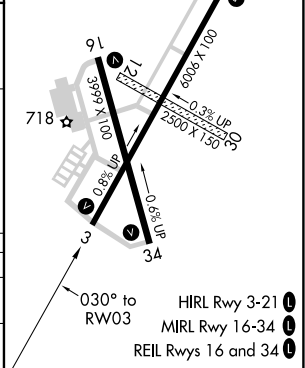
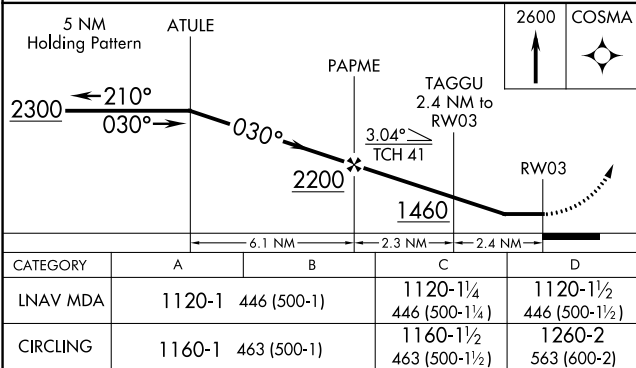
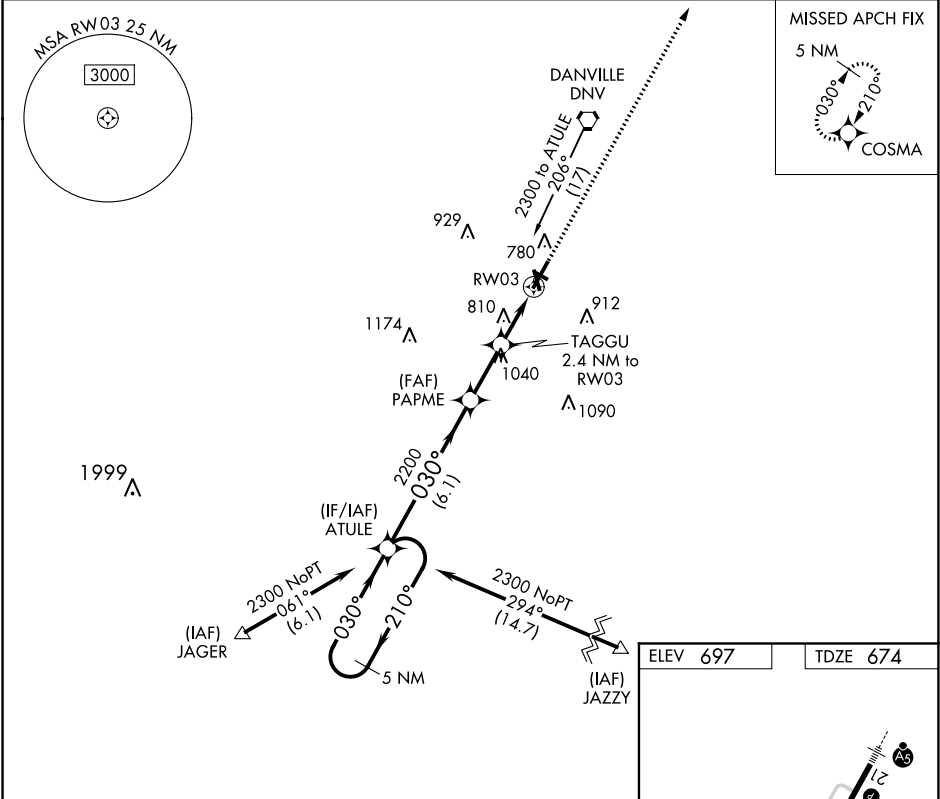
APP CRS	Rwy Idg	6006
030°	TDZE	674
	Apt Elev	697

RNAV (GPS) RWY 3  
VERMILION RGNL (DNV)

**⚠** If local altimeter setting not received, use University of Illinois-Willard altimeter setting and increase all MDAs 100 feet. DME/DME RNP-0.3 NA. Helicopter visibility reduction below ¾ SM NA.

MISSED APPROACH: Climb to 2600 direct COSMA and hold.

AWOS-3 119.275	CHAMPAIGN APP CON ★ 121.35 285.65	CLNC DEL 121.7	UNICOM 122.7 (CTAF) 0
-------------------	--------------------------------------	-------------------	--------------------------



EC-3, 31 DEC 2020 to 28 JAN 2021

EC-3, 31 DEC 2020 to 28 JAN 2021