

LOC I-DPA  
**109.5**

APP CRS  
**097°**

Rwy Idg  
TDZE  
Apt Elev  
**4750**  
**756**  
**759**

ILS or LOC RWY 10

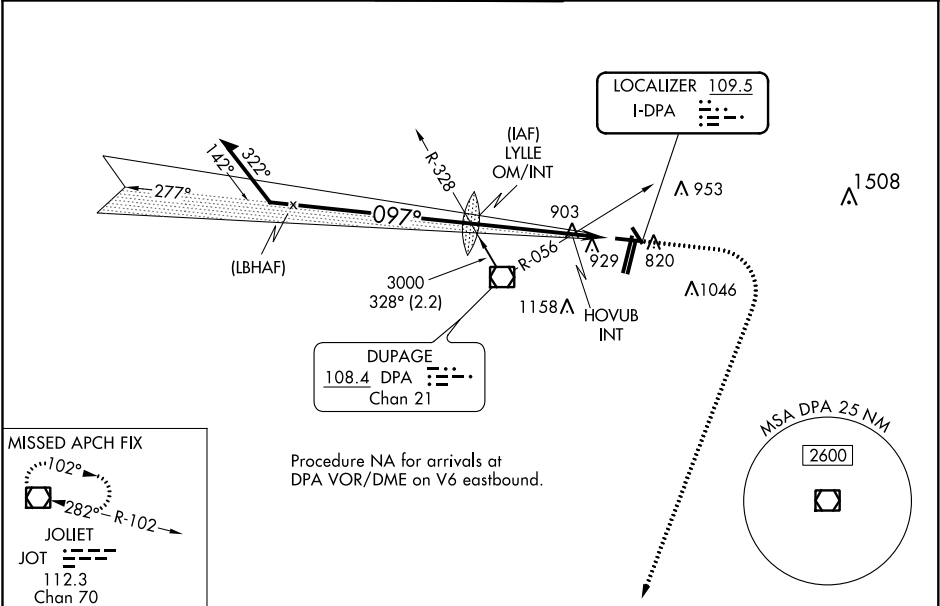
DUPAGE (DPA)

⚠

When local altimeter setting not received, use Chicago/Aurora altimeter setting and increase all DA 37 feet and all MDA 40 feet, and increase S-LOC 10 Cats C and D and HOVUB INT minimums S-LOC 10 Cats C and D visibility ½ mile. Circling Rwy 15, 28, 33 NA at night.

MISSED APPROACH: Climb to 1200 then climbing right turn to 2600 direct JOT VOR/DME and hold.

ATIS <b>132.075</b>	CHICAGO APP CON <b>133.5 349.0</b>	DUPAGE TOWER <b>120.9 257.8</b>	GND CON <b>121.8</b>	CLNC DEL <b>119.75</b>
------------------------	---------------------------------------	------------------------------------	-------------------------	---------------------------



Remain within 10 NM		1200		2600		JOT		ELEV 759		TDZE 756	
3000		277°		2501		LYLLE OM/INT		* LOC only.			
097°		2600		*1300		HOVUB INT		*1340 when using Chicago/Aurora altimeter setting.			
GS 3.00° TCH 50		3.6 NM		1.7 NM							
CATEGORY	A	B	C	D							
S-ILS 10	956-¾		200 (200-¾)								
S-LOC 10	1300-1 544 (600-1)		1300-1½ 544 (600-1½)								
CIRCLING	1300-1 541 (600-1)		1360-1¾ 601 (700-1¾)		1360-2 601 (700-2)						
HOVUB INT MINIMUMS (DUAL VOR RECEIVERS REQUIRED)											
S-LOC 10	1220-1 464 (500-1)		1220-1¾ 464 (500-1¾)								
CIRCLING	1260-1 501 (600-1)		1360-1¾ 601 (700-1¾)		1360-2 601 (700-2)						

097° 5.3 NM from FAF

FAF to MAP 5.3 NM

Knots	60	90	120	150	180
Min:Sec	5:18	3:32	2:39	2:07	1:46