

WAAS
CH **49105**
W33A

APP CRS
328°

Rwy Idg
TDZE **705**
Apt Elev **712**

RNAV (GPS) RWY 33

AURORA MUNI (ARR)

RNP APCH.
▼ For uncompensated Baro-VNAV systems, LNAV/VNAV NA below -16°C or above 54°C.
For inop MALS, increase LPV visibility to 1¼ SM all Cts, LNAV Cts A/B visibility to 1 SM.

MALS
MISSED APPROACH:
Climb to 3000 direct UCORO and hold, continue climb-in-hold to 3000.

ATIS
125.85

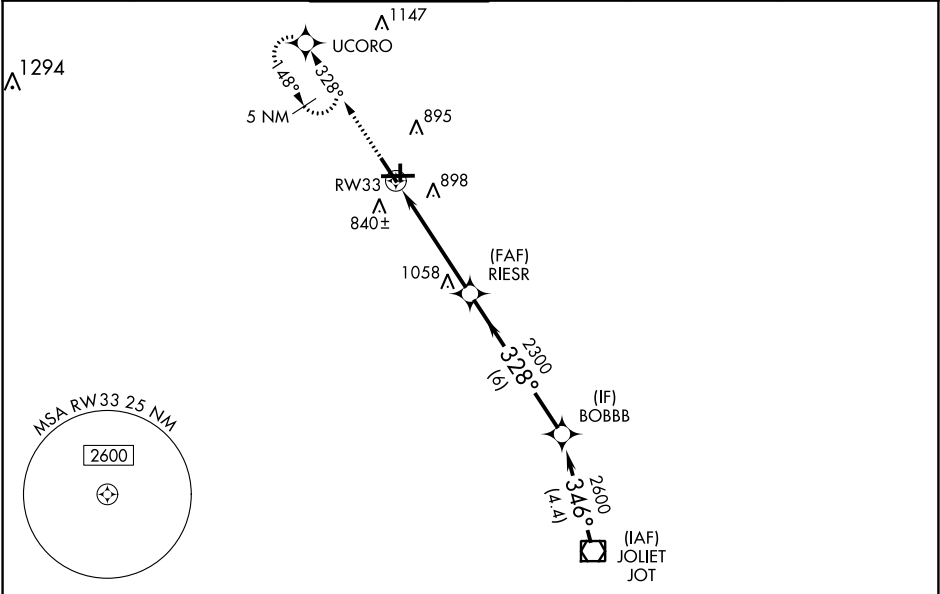
CHICAGO APP CON
133.5 349.0

AURORA TOWER ★
120.6 (CTAF) 0

GND CON
121.7

CLNC DEL
121.7
(When tower closed)

UNICOM
122.95 123.5



ELEV 712 TDZE 705

HIRL Rwy 15-33 and 9-27
MIRL Rwy 18-36
REIL Rwy 15, 18, 27, and 36

3000 UCORO

*LNAV only.

Distances: 1.3 NM, 3.5 NM, 6 NM, 4.4 NM

CATEGORY	A	B	C	D
LPV DA	1042-¾ 337 (400-¾)			
LNAV/VNAV DA	1194-1¼ 489 (500-1¼)			
LNAV MDA	1140-¾ 435 (500-¾)			1140-1 435 (500-1)
CIRCLING	1200-1 488 (500-1)		1200-1½ 488 (500-1½)	1320-2 608 (700-2)