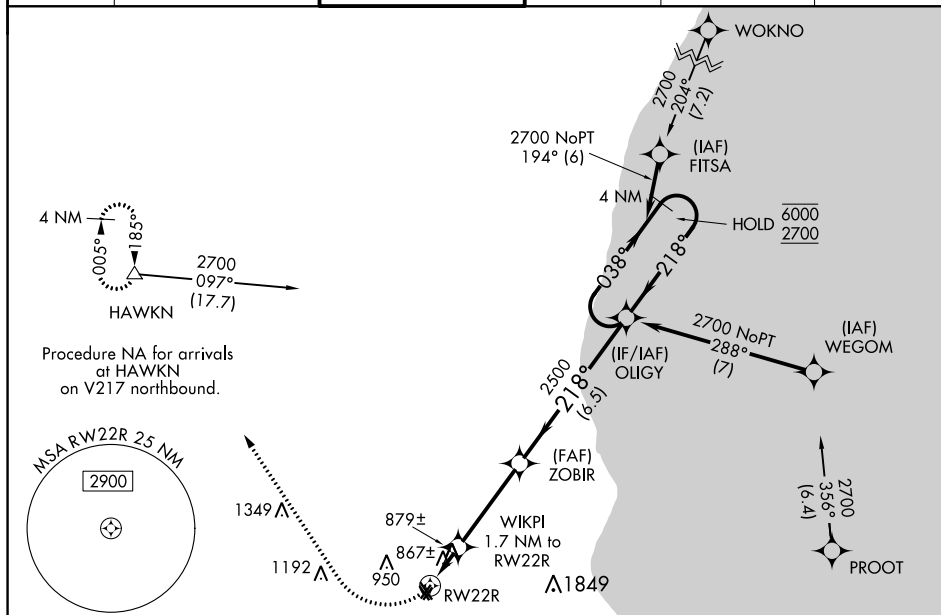


RNAV (GPS) RWY 22R
LAWRENCE J TIMMERMAN (MWC)

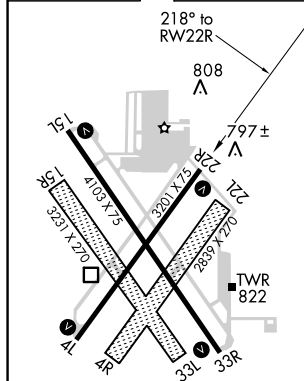
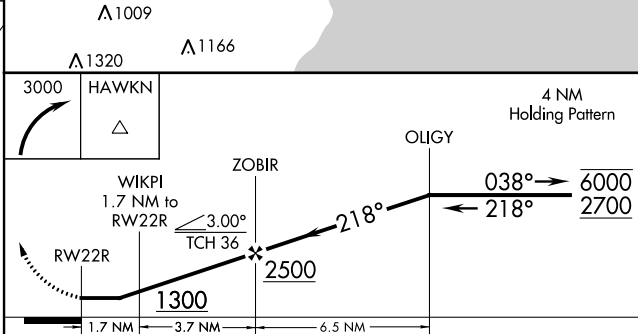
T Circling NA to Rwy 4R, 15R, 22L, and 33L. Rwy 22R helicopter visibility reduction below $\frac{3}{4}$ SM NA. When local altimeter setting not received, use General Mitchell Intl altimeter setting and increase all MDAs 40 feet and LP and LNAV visibility Cats C and D $\frac{1}{8}$ SM and Circling visibility Cat C $\frac{1}{4}$ SM.

MISSED APPROACH: Climbing right turn to 3000 direct HAWKN and hold.

ATIS 128.3	MILWAUKEE APP CON 125.35 307.0	TIMMERMAN TOWER ★ 120.5 (CTAF) 0	GND CON 121.7	CLNC DEL 121.7 (When twr closed)	UNICOM 122.95
----------------------	--	--	-------------------------	---	-------------------------



ELEV 745		TDZE 739
----------	--	----------

MIRL Rwy 4L-22R and 15L-33R **L**

CATEGORY	A	B	C	D
LP MDA	1160-1 421 (500-1)		1160-1¼ 421 (500-1¼)	
INAV MDA	1160-1 421 (500-1)		1160-1¼ 421 (500-1¼)	
CIRCLING	1220-1 475 (500-1)	1340-1 595 (600-1)	1340-1½ 595 (600-1½)	1340-2 595 (600-2)