

RNAV (GPS) RWY 15L
LAWRENCE J TIMMERMAN (MWC)

▼ Circling NA to Rwy's 4R, 15R, 22L and 33L. Rwy 15L helicopter visibility reduction below $\frac{3}{4}$ SM NA. For uncompensated Baro-VNAV systems, LNAV/VNAV NA below -16°C or above 54°C. VDP and Baro-VNAV NA when using General Mitchell Intl altimeter setting. When local altimeter setting not received, use General Mitchell Intl altimeter setting and increase LPV DA to 1024 feet and LNAV/VNAV to DA 1251 feet; increase all MDAs 40 feet and LNAV visibility Cots C and D $\frac{1}{2}$ SM, and Circling visibility Cat C $\frac{1}{4}$ SM.

MISSED APPROACH:
Climb to 1300 then
climbing right turn to
3000 direct HAWKN
and hold.

Procedure NA for arrivals at EWA on V170 northwest bound.

EWAWI 2800 086° (13.8)

(IAF) JEDEM

2800 NoPT to IZAHO 111° (6.9)

(IAF) HAXEP

4 NM

4 NM

HAWKN

HOLD 6000 2800

(IF/IAF) IZAHO

2800 NoPT 189° (6.8)

2700

(FAF) YIKUS

148°

NUHLE 2.3 NM to RW15L

919±

1349△

1192△

950△

△ 867±

△ 1849

△ 1009

1166

148° to RW15L

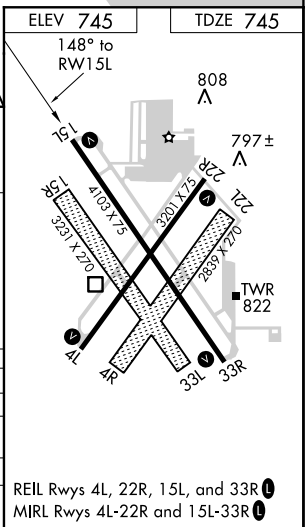
ELEV 745

TDZE 745

808

MSA RW15L 25 NM

2900



DEC-3, 31 DEC 2020 to 28 JAN 2021