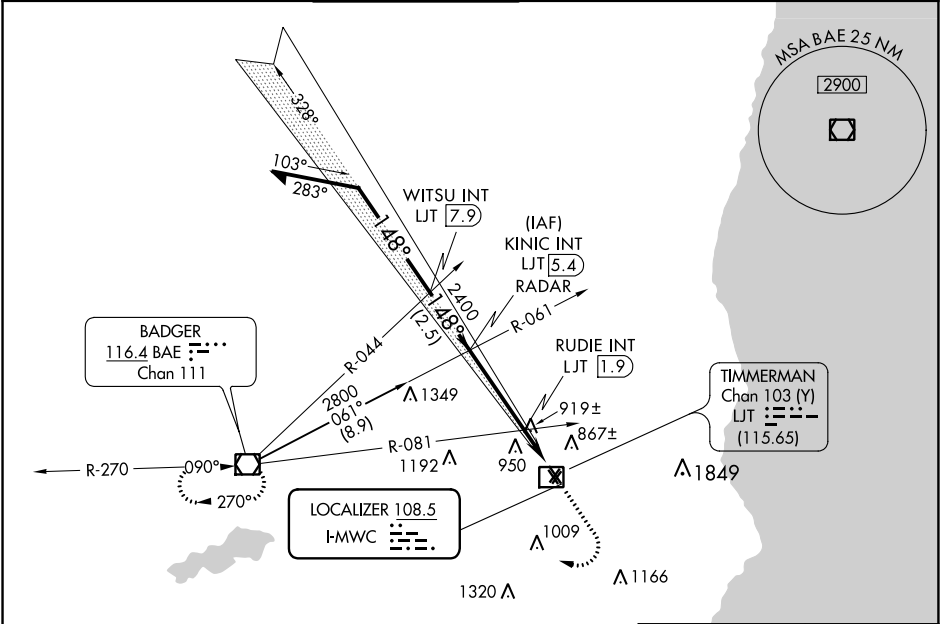


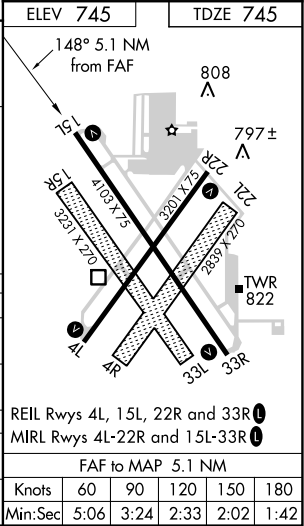
LOC I-MWC 108.5	APP CRS 148°	Rwy Idg TDZE Apt Elev	4103 745 745
---------------------------	------------------------	-----------------------------	---

LOC RWY 15L
LAWRENCE J TIMMERMAN (MWC)

Circling NA to Rwys 4R, 15R, 22L and 33L. Rwy 15L helicopter visibility reduction below ¾ SM NA. # Simultaneous reception of I-MWC and LJT DME required.				MISSED APPROACH: Climb to 3000 then right turn direct BAE VOR/DME and hold.	
ATIS 128.3	MILWAUKEE APP CON 125.35 307.0	TIMMERMAN TOWER ★ 120.5 (CTAF) 0	GND CON 121.7	CLNC DEL 121.7 (When twr closed)	UNICOM 122.95



*1320 when using General Mitchell Intl altimeter setting. Remain within 10 NM		KINIC INT LJT 5.4 RADAR		3000	BAE
2800		WITSU INT LJT 7.9		RUDIE INT LJT 1.9	
2700		2400		*1280	
2.5 NM		3.5 NM		1.6 NM	
CATEGORY	A	B	C	D	
S-LOC 15L	1280-1	535 (600-1)	1280-1½	535 (600-1½)	
CIRCLING	1280-1	1340-1	1340-1½	1340-2	
	535 (600-1)	595 (600-1)	595 (600-1½)	595 (600-2)	
RUDIE FIX MINIMUMS (DUAL VOR RECEIVERS OR DME REQUIRED #)					
S-LOC 15L	1180-1	435 (500-1)	1180-1¼	435 (500-1¼)	
CIRCLING	1220-1	1340-1	1340-1½	1340-2	
	475 (500-1)	595 (600-1)	595 (600-1½)	595 (600-2)	



EC-3, 31 DEC 2020 to 28 JAN 2021

EC-3, 31 DEC 2020 to 28 JAN 2021