

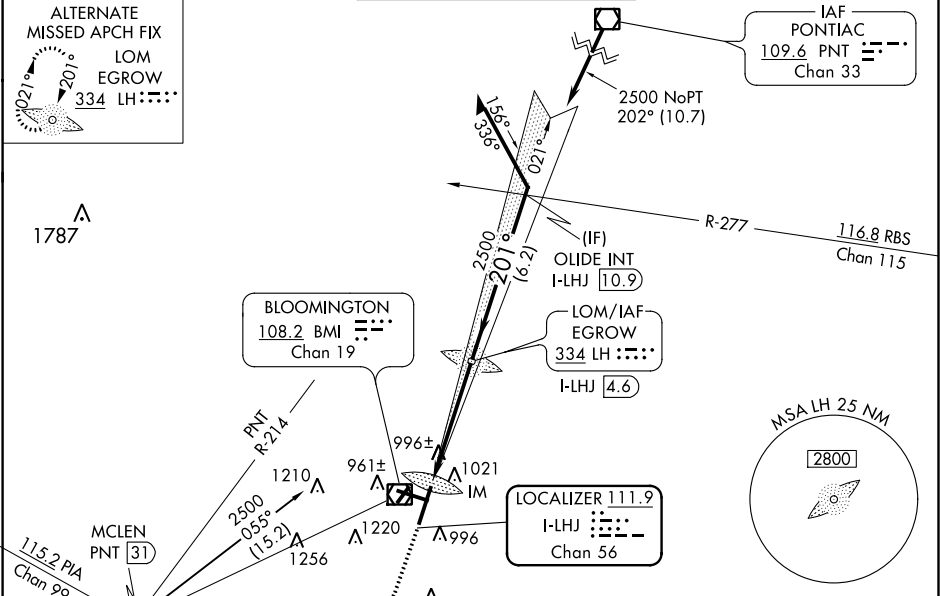
LOC/DME I-LHJ <b>111.9</b> Chan <b>56</b>	APP CRS <b>201°</b>	Rwy Idg <b>8000</b> TDZE <b>871</b> Apt Elev <b>871</b>	ILS or LOC RWY 20 CENTRAL IL RGNL ARPT AT BLOOMINGTON-NORMAL (BMI)
---	------------------------	---	---

**⚠** VDP NA when using General Downing-Peoria Intl altimeter setting. When local altimeter setting not received, use General Downing-Peoria Intl altimeter setting: increase all DA 116 feet and all MDA 120 feet; increase S-ILS all Cats visibility to RVR 2400, S-LOC Cat C and D visibility to RVR 5500, and Circling Cat C and D visibility ¼ mile. For inoperative ALSF-2 when using General Downing-Peoria Intl altimeter setting increase ILS all Cats visibility to RVR 5000.

ALSF-2

**⚠** MISSED APPROACH: Climb to 1500 then climbing right turn to 3000 on heading 270° and PNT VOR/DME R-214 to MCLEN INT/PNT 31 DME and hold.

ATIS <b>135.35</b>	PEORIA APP CON <b>128.725 256.9</b>	BLOOMINGTON TOWER ★ <b>124.6</b> (CTAF) <b>269.575</b>	GND CON <b>121.65</b>	UNICOM <b>122.95</b>
-----------------------	--	---	--------------------------	-------------------------



ELEV 871	TDZE 871
201° 4.8 NM from FAF	
916	
16525 X 150	
20	
917±	
8000 X 150	
TWR 972	
2	
20	
201° 4.8 NM from FAF	
HRL Rwy 2-20 and 11-29	
FAF to MAP 4.8 NM	
Knots	60 90 120 150 180
Min:Sec	4:48 3:12 2:24 1:55 1:36

1500	3000	PNT R-214	MCLEN	LH LOM I-LHJ 4.6	Remain within 10 NM
↑	hdg 270°		△		
* LOC only					
* I-LHJ 0.9					
IM 2459 021° 201° 2500 GS 3.00° TCH 58					
0.2 0.9 3.7 NM					
CATEGORY	A	B	C	D	
S-ILS 20	1071/18		200 (200-½)		
S-LOC 20	1260/24 389 (400-½)		1260/35 389 (400-¾)		
CIRCLING	1340-1 469 (500-1)		1620-2¼ 749 (800-2¼) 1620-2½ 749 (800-2½)		