

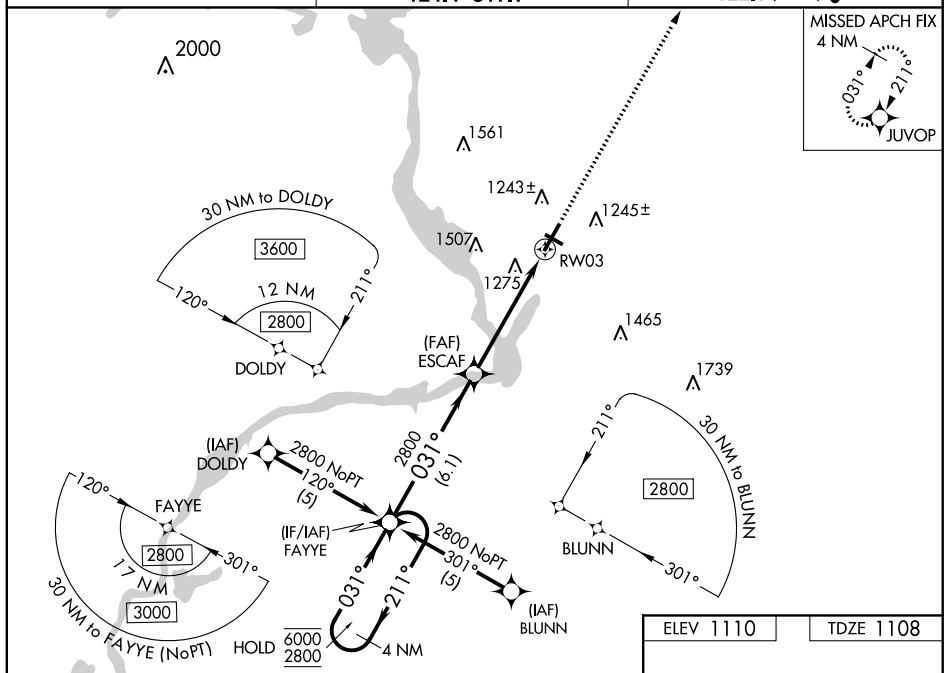
# RNAV (GPS) RWY 3

## STEVENS POINT MUNI (STE)


**T** Rwy 3 helicopter visibility reduction below  $\frac{3}{4}$  SM NA.  
**A** For uncompensated Baro-VNAV systems, LNAV/VNAV NA below -17° C or above 54°C.

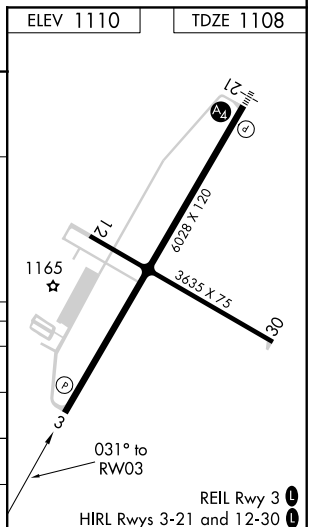
**MISSED APPROACH:**  
Climb to 2900 direct  
JUVOP and hold.

MINNEAPOLIS CENTER  
124.4 317.7

UNICOM  
122.7 (CTAF) **L**

VGS| and RNAV glidepath not coincident.

| CATEGORY  |     | A   | B                     | C  | D  |
|---|-----|---|-----------------------|--|--|
| LPV   | DA  | 1409-1 301 (300-1)  |                       |  |  |
| RNAV/<br>VNAV   | DA  | 1594-1 <sup>3</sup> / <sub>4</sub> 486 (500-1 <sup>3</sup> / <sub>4</sub> ) |                       |  |  |
| RNAV  | MDA | 1540-1 432 (500-1)  |                       | 1540-1 <sup>1</sup> / <sub>4</sub><br>432 (500-1 <sup>1</sup> / <sub>4</sub> ) | 1540-1 <sup>1</sup> / <sub>2</sub><br>432 (500-1 <sup>1</sup> / <sub>2</sub> ) |
|  CIRCULING |     | 1580-1<br>470 (500-1)   | 1600-1<br>490 (500-1) | 1820-2<br>710 (800-2)  | 1820-2 <sup>1</sup> / <sub>4</sub><br>710 (700-2 <sup>1</sup> / <sub>4</sub> ) |



STEVENS POINT MUNI (STE)  
RNAV (GPS) RWY 3