

WAAS CH <b>40128</b> <b>W25A</b>	APP CRS <b>249°</b>	Rwy Idg <b>10002</b> TDZE <b>736</b> Apt Elev <b>742</b>
--	------------------------	--

# RNAV (GPS) RWY 25

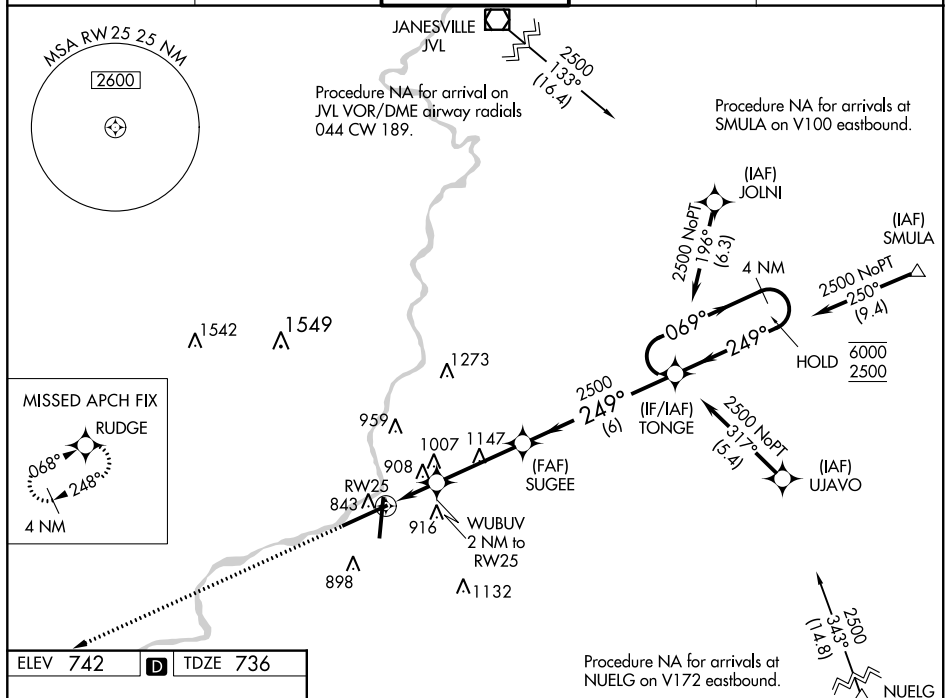
## CHICAGO/ROCKFORD INTL (RFD)

RNP APCH.

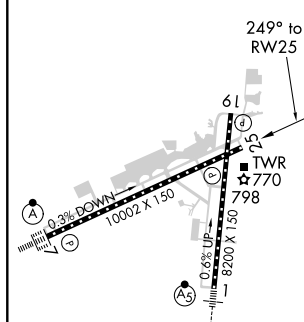
**ASP** Rwy 25 helicopter visibility reduction below  $\frac{3}{4}$  SM NA.  
For uncompensated Baro-VNAV systems, LNAV/VNAV NA below -25°C or above 39°C.

**MISSED APPROACH:**  
Climb to 2500 direct  
RUDGE and hold.

ATIS 127.6	ROCKFORD APP CON 121.0 327.0	ROCKFORD TOWER 118.1 290.375	GND CON 121.9 290.375	CLNC DEL 119.25
---------------	---------------------------------	---------------------------------	--------------------------	--------------------



ELEV 742	<b>D</b>	TDZE 736
----------	----------	----------



REIL Rwy 19 and 25  
HIRL Rwy 1-19 and 7-25  
TDZ/CL Rwy 1 and 7

Diagram illustrating the VOR/DME station layout for the 'RIDGE' station. The diagram shows a VOR/DME station at the center, with a DME arc of 1.400 NM. A VOR radial of 069° is shown, with a DME arc of 2500 NM. A VOR radial of 249° is also shown. The diagram includes a scale bar from 0 to 6 NM and a note 'GP 3.00° TCH 50'. The station is labeled 'RIDGE' and 'VGS and RNAV glidepath not coincident (VGS Angle 3.00/TCH 75)'. The diagram also shows a 'SUGEE' station at 2500 NM and a 'TONGE' station at 2500 NM. A note '\* LNAV only.' is present.