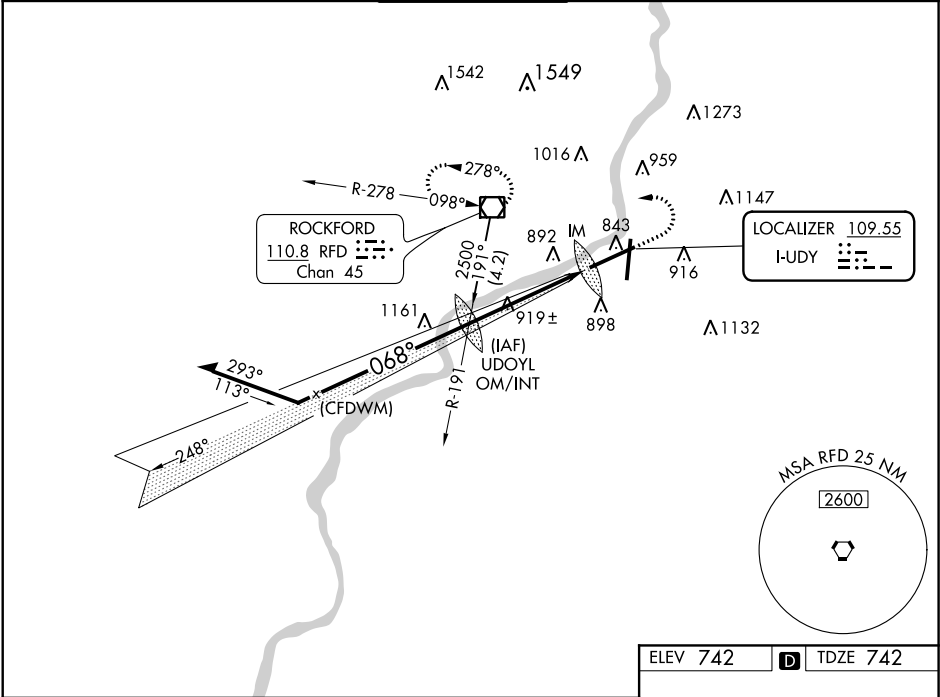


LOC I-UDY	APP CRS	Rwy Idg	10002
109.55	068°	TDZE	742
		Apt Elev	742

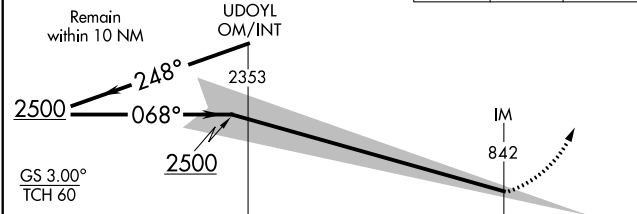
ILS RWY 7 (CAT II & III)
CHICAGO/ROCKFORD INTL (RFD)

V ASR	CAT II: RVR 1000 authorized with specific OPSPEC, MSPEC, or LOA approval and use of autoland or HUD to touchdown.	ALSF-2 	MISSED APPROACH: Climb to 1700 then climbing left turn to 2600 direct RFD VOR/DME and hold.
------------------------	---	-------------------	---

ATIS 127.6	ROCKFORD APP CON 121.0 327.0	ROCKFORD TOWER 118.1 290.375	GND CON 121.9 290.375	CLNC DEL 119.25
---------------	---------------------------------	---------------------------------	--------------------------	--------------------



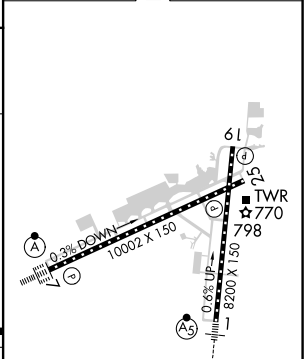
VGSI and ILS glidepath not coincident (VGSI Angle 3.00°/TCH 69°).	1700	2600	RFD
---	------	------	-----



CATEGORY	A	B	C	D
S-ILS 7	CAT II RA 114/12 100 DA 842			
S-ILS 7	CAT III RVR 06			

CATEGORY II & III ILS - SPECIAL AIRCREW & AIRCRAFT CERTIFICATION REQUIRED

ELEV 742	D	TDZE 742
----------	----------	----------



REIL Rwy 19 and 25
HIRL Rwy 1-19 and 7-25
TDZ/CL Rwy 1 and 7