

WAAS CH <b>45730</b> <b>W31A</b>	APP CRS <b>307°</b>	Rwy Idg <b>5200</b> TDZE <b>1195</b> Apt Elev <b>1201</b>
--	------------------------	---

RNAV (GPS) RWY 31  
WAUSAU DOWNTOWN (AUW)

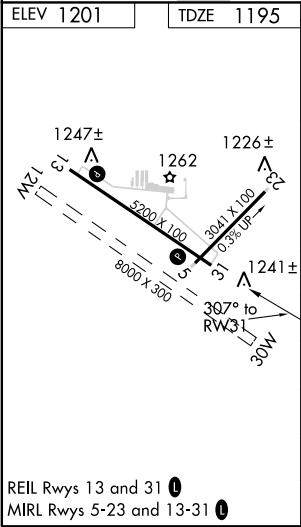
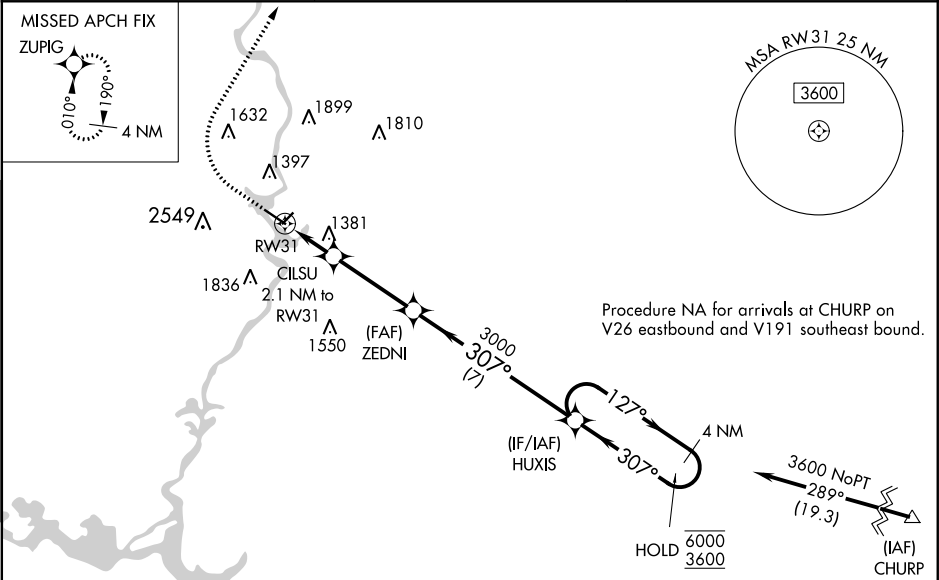
RNP APCH.

Circling NA to Rws 12W and 30W. Circling NA southwest of Rwy 13-31. For uncompensated Baro-VNAV systems, LNAV/VNAV NA below -21°C or above 54°C.

MISSED APPROACH: Climb to 1700 then climbing right turn to 4000 direct ZUPIG and hold.

\*\* Missed approach requires minimum climb of 300 feet per NM to 2100.

ASOS <b>125.925</b>	MINNEAPOLIS CENTER <b>124.4 317.7</b>	UNICOM <b>122.7 (CTAF) 0</b>
------------------------	--	---------------------------------



1700		4000	ZUPIG	HUXIS		4 NM Holding Pattern
*LNAV only.		*1.5 NM to RWY 31	CILSU 2.1 NM to RWY 31	*1900		3000
		1.5 NM	0.6	3.4 NM	7 NM	
CATEGORY	A	B	C	D		
LPV DA	1445-7/8		250 (300-7/8)			
LNAV/VNAV DA	**1505-1		310 (400-1)			
LNAV/VNAV DA	1661-15/8		466 (500-15/8)			
LNAV MDA	1700-1	505 (500-1)	1700-13/8	505 (500-13/8)		
CIRCLING	1840-1	639 (700-1)	1960-2 759 (800-2)	2260-3 1059 (1100-3)		

EC-3, 31 DEC 2020 to 28 JAN 2021

EC-3, 31 DEC 2020 to 28 JAN 2021