

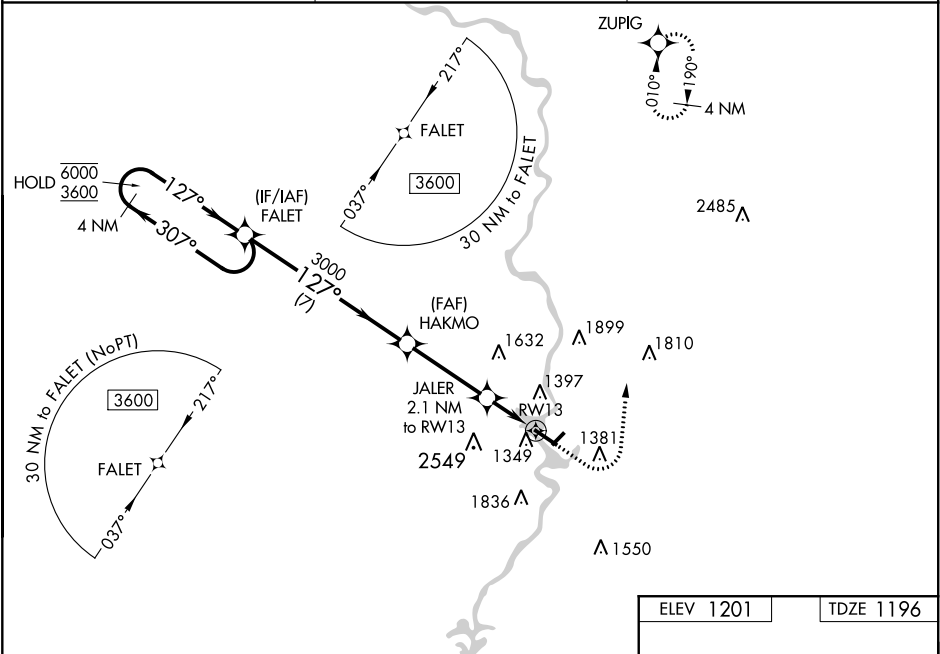
WAAS CH 90330 W13A	APP CRS 127°	Rwy Idg 5200 TDZE 1196 Apt Elev 1201
--	------------------------	---

RNAV (GPS) RWY 13

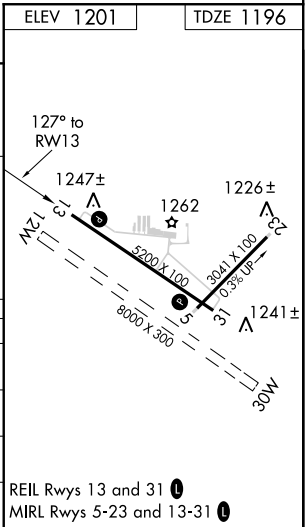
WAUSAU DOWNTOWN (AUW)

RNP APCH.	MISSED APPROACH: Climb to 1800 then climbing left turn to 4000 direct ZUPIG and hold.
<div><div>T</div><div>A</div><div>Circling NA to Rwy 12W and 30W. Circling NA southwest of Rwy 13-31. For uncompensated Baro-VNAV systems, LNAV/VNAV NA below -17°C or above 54°C.</div></div>	

ASOS 125.925	MINNEAPOLIS CENTER 124.4 317.7	UNICOM 122.7 (CTAF) 0
------------------------	--	---------------------------------



4 NM Holding Pattern		FALET		HAKMO		JALER		RW13		ZUPTG	
6000 ← 307°		127° →		127°		3000		2.1 NM to RW13		*LNAV only.	
3600		3000		*1900		*1.1 NM to RW13		RW13			
GP 3.00° TCH 43		7 NM		3.4 NM		1 NM		1.1 NM			
CATEGORY	A	B	C	D							
LPV DA	1446-3/4 250 (300-3/4)										
LNAV/ VNAV DA	1534-1 1/8 338 (400-1 1/8)										
LNAV MDA	1600-1	404 (400-1)	1600-1 1/8	404 (400-1 1/8)							
CIRCLING	1840-1	639 (700-1)	1960-2 1/4 759 (800-2 1/4)	2260-3 1059 (1100-3)							



EC-3, 31 DEC 2020 to 28 JAN 2021

EC-3, 31 DEC 2020 to 28 JAN 2021