

WAAS CH <b>99515</b> <b>W24A</b>	APP CRS <b>242°</b>	Rwy Idg <b>7699</b> TDZE <b>681</b> Apt Elev <b>695</b>
--	------------------------	---

## RNAV (GPS) RWY 24

GREEN BAY-AUSTIN STRAUBEL INTL (GRB)

**T** For uncompensated Baro-VNAV systems, LNAV/VNAV  
ASR NA below -16° C (4° F) or above 47°C (116°F).  
DME/DME RNP-0.3 NA.

**MISSED APPROACH:** Climb to 2500 direct KILBY and hold.

ATIS <b>124.1</b>	GREEN BAY APP CON ★ <b>119.4 338.2</b>	GREEN BAY TOWER ★ <b>118.7(CTAF) 0 257.8</b>	GND CON <b>121.9</b>	CLNC DEL <b>121.75</b>
----------------------	---	---	-------------------------	---------------------------

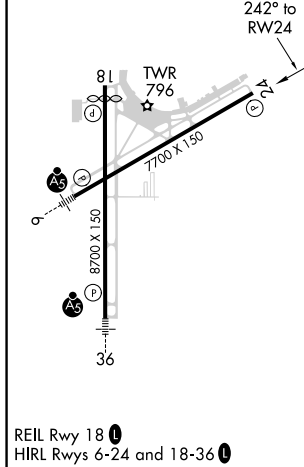
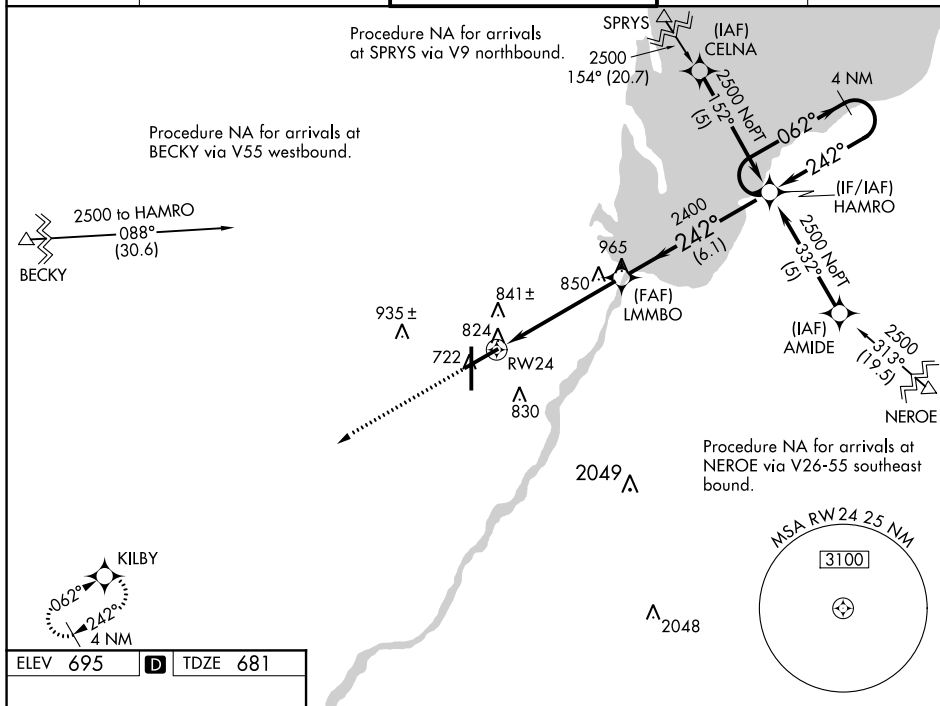


Diagram illustrating a flight profile for a 2500 ft holding pattern. The profile includes a 1.2 NM segment, a 4 NM segment, and a 6.1 NM segment. The holding pattern is a 4 NM rectangle. The diagram shows a 062° heading and a 242° heading, with a 242° turn angle. The holding pattern is labeled '2500' and 'Holding Pattern'. The diagram also shows a 1.2 NM segment to RW24, a 1.2 NM segment to LMMBO, and a 6.1 NM segment to HAMRO. The diagram includes a scale bar for 1.2 NM, 4 NM, and 6.1 NM. The diagram also shows a 1.2 NM segment to RW24, a 1.2 NM segment to LMMBO, and a 6.1 NM segment to HAMRO. The diagram includes a scale bar for 1.2 NM, 4 NM, and 6.1 NM.