

WAAS

CH **42802**

W18A

APP CRS

182°

Rwy Idg

8201

TDZE

695

Apt Elev

695

RNAV (GPS) RWY 18

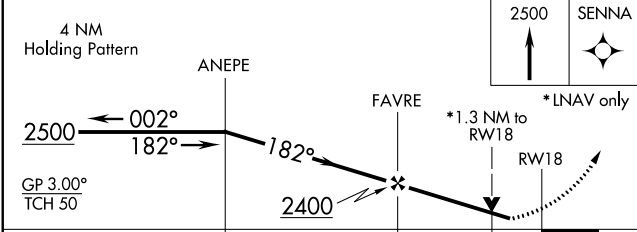
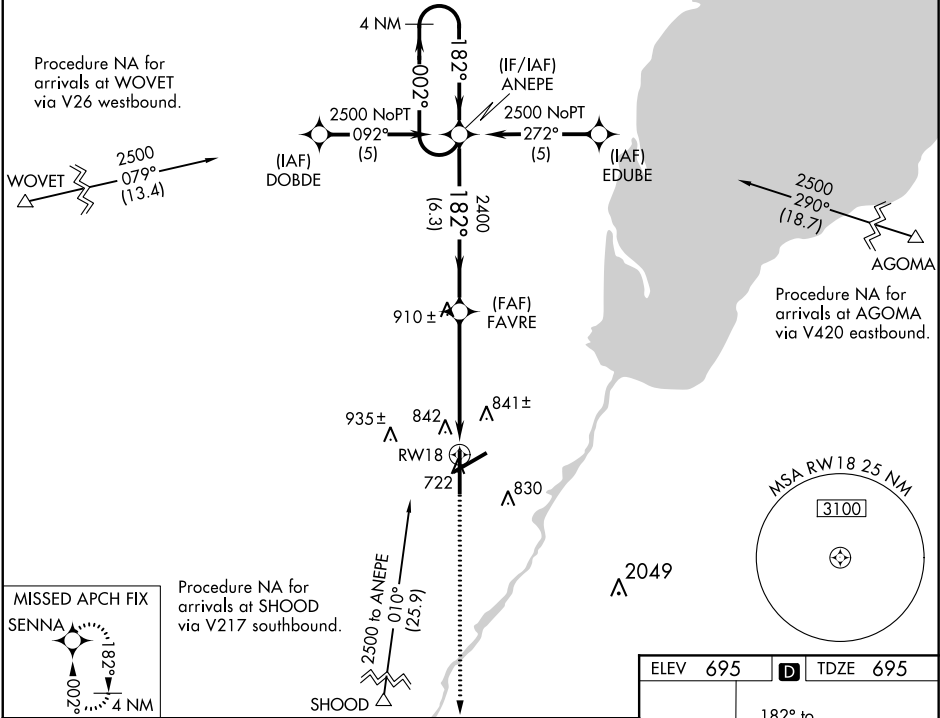
GREEN BAY-AUSTIN STRAUBEL INTL (GRB)

ASR

For uncompensated Baro-VNAV systems, LNAV/VNAV NA below -16° C (4° F) or above 47° C (117° F). DME/DME RNP-0.3 NA. Visibility reduction by helicopters NA.

MISSED APPROACH: Climb to 2500 direct SENNA and hold.

ATIS 124.1	GREEN BAY APP CON★ 119.4 338.2	GREEN BAY TOWER★ 118.7 (CTAF) 0 257.8	GND CON 121.9	CLNC DEL 121.75
----------------------	------------------------------------------	-------------------------------------------------	-------------------------	---------------------------



CATEGORY	A	B	C	D
LPV DA	979-1 284 (300-1)			
LNAV/VNAV DA	1187-1¾ 492 (500-1¾)			
LNAV MDA	1160-1 465 (500-1)	1160-1½ 465 (500-1½)	1160-1½ 465 (500-1½)	1160-1½ 465 (500-1½)
CIRCLING	1200-1 505 (600-1)	1200-1½ 505 (600-1½)	1260-2 565 (600-2)	1260-2 565 (600-2)

