

LOC/DME I-GRB 109.5 Chan 32	APP CRS 062°	Rwy Idg TDZE Apt Elev	7699 692 695
---	------------------------	-----------------------------	---

ILS or LOC RWY 6

GREEN BAY-AUSTIN STRAUBEL INTL (GRB)



ASR

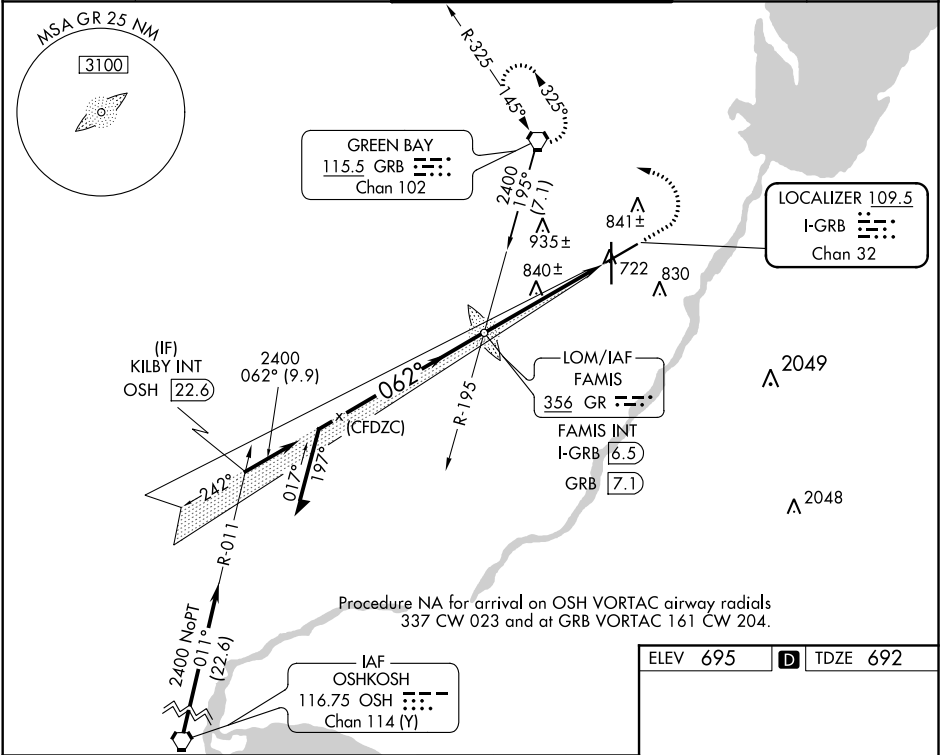
* RVR 1800 authorized with the use of
FD or AP or HUD to DA.



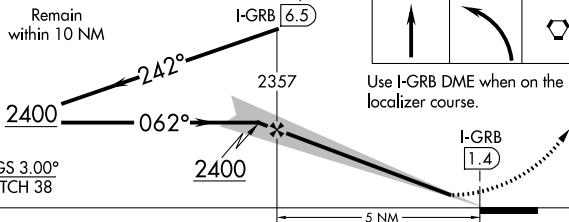
MALSR

MISSED APPROACH: Climb to 1400 then climbing left turn
to 2500 direct GRB VORTAC and hold.

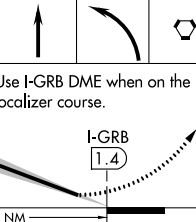
ATIS 124.1	GREEN BAY APP CON★ 119.4 338.2	GREEN BAY TOWER★ 118.7(CTAF) 0 257.8	GND CON 121.9	CLNC DEL 121.75
----------------------	--	--	-------------------------	---------------------------



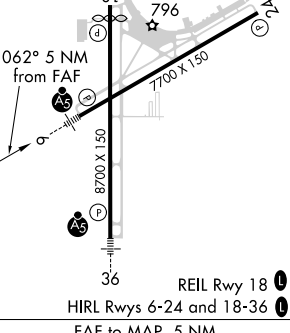
Remain within 10 NM



Use I-GRB DME when on the localizer course.



CATEGORY	A	B	C	D
S-ILS 6 *	892/24 200 (200-½)			
S-LOC 6	1100/24 408 (500-½)		1100/40 408 (500-¾)	
CIRCLING	1200-1 505 (600-1)		1200-1½ 505 (600-1½)	1260-2 565 (600-2)



REIL Rwy 18

HIRL Rwy 6-24 and 18-36

FAF to MAP 5 NM

Knots	60	90	120	150	180
Min:Sec	5:00	3:20	2:30	2:00	1:40

EC-3, 31 DEC 2020 to 28 JAN 2021

EC-3, 31 DEC 2020 to 28 JAN 2021