

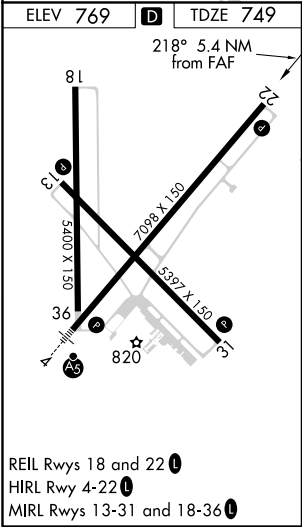
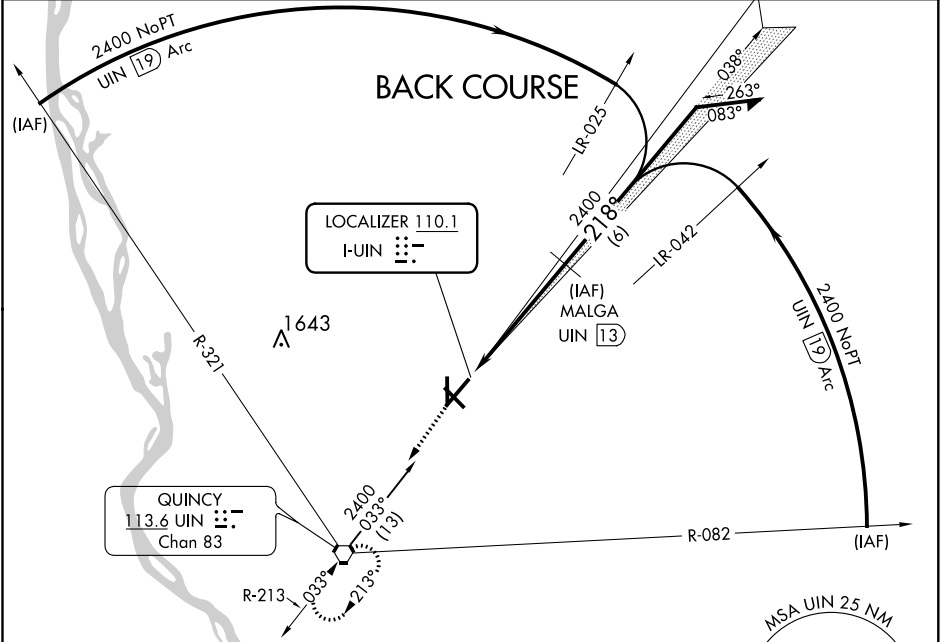
LOC I- UIN 110.1	APP CRS 218°	Rwy Idg TDZE Apt Elev	7098 749 769
-----------------------------------	------------------------	-----------------------------	---


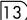

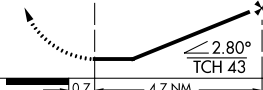

LOC/DME BC RWY 22
QUINCY RGNL-BALDWIN FIELD (UIN)

Simultaneous reception of I-UIN and UIN DME Required.
DME from UIN VORTAC.

MISSED APPROACH: Climb to 2400
direct UIN VORTAC and hold.

ASOS 121.425	KANSAS CITY CENTER 126.225 317.775	UNICOM 123.0 (CTAF)
------------------------	--	-------------------------------



2400 ↑		UIN 	MALGA UIN 13 		2700 	
		UIN 8.3	038°		Remain within 10 NM	
		0.7	4.7 NM		218°	
CATEGORY		A	B	C	D	
S-22		1140-1 391 (400-1)				1140-1¼ 391 (400-1¼)
CIRCLING		1200-1 431 (500-1)	1220-1 451 (500-1)	1220-1½ 451 (500-1½)	1320-2 551 (600-2)	

EC-3, 31 DEC 2020 to 28 JAN 2021

EC-3, 31 DEC 2020 to 28 JAN 2021