

LOC I-VOK

108.5

APCH CRS

269°

Rwy Idg

9000

THRE

904

Arprt Elev

912

AL-714 [USAF]

VOLK FIELD (KVOK)

▼

* When ALS inop, increase vis to ¾ mile.
** When ALS inop, increase CAT AB vis to 1 mile,
CAT CDE vis to 1½ miles.

ALS F-1

MISSED APPROACH: Climb to 2200, then climbing left turn to 4000 via DLL VORTAC R-304 direct DLL and hold.

ATIS

134.35 257.85

VOLK APP CON

135.25 244.875

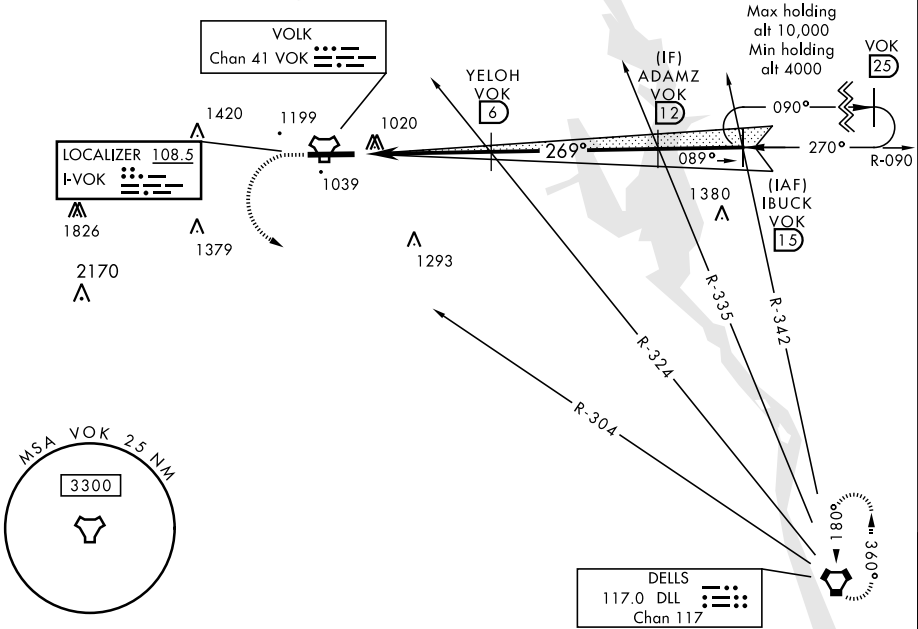
VOLK TOWER ★

127.5 0 (CTAF) 239.25 0

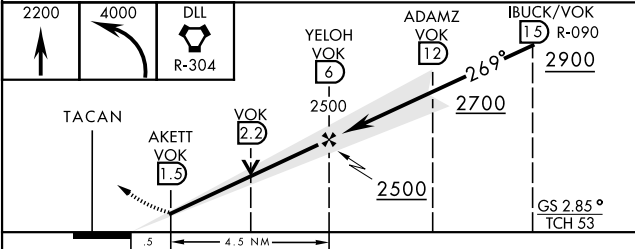
GND CON

121.9 275.8

*** Circling NA South of Rwy 9-27.



EMERG SAFE ALT 100 NM 4200



CATEGORY	A	B	C	D	E
S-ILS 27 *	1104/24		200	(200-½)	
S-LOC 27 **	1320/24	416 (500-½)	1320/40	416 (500-¾)	
CIRCLING ***	1400-1 488 (500-1)	1500-1 588 (600-1)	1500-1½ 588 (600-1½)	1500-2 588 (600-2)	1580-2¼ 668 (700-2¼)

ELEV 912

THRE 904

A5

P

A1

9000 x 150

27

TWR

1262

269° from FAF

HIRL Rwy 9-27 0

FAF to MAP 4.5 NM

Knots	60	90	120	150	180
Min:Sec	4:30	3:00	2:15	1:48	1:30