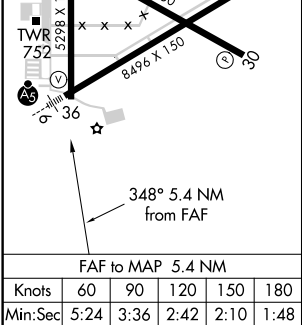
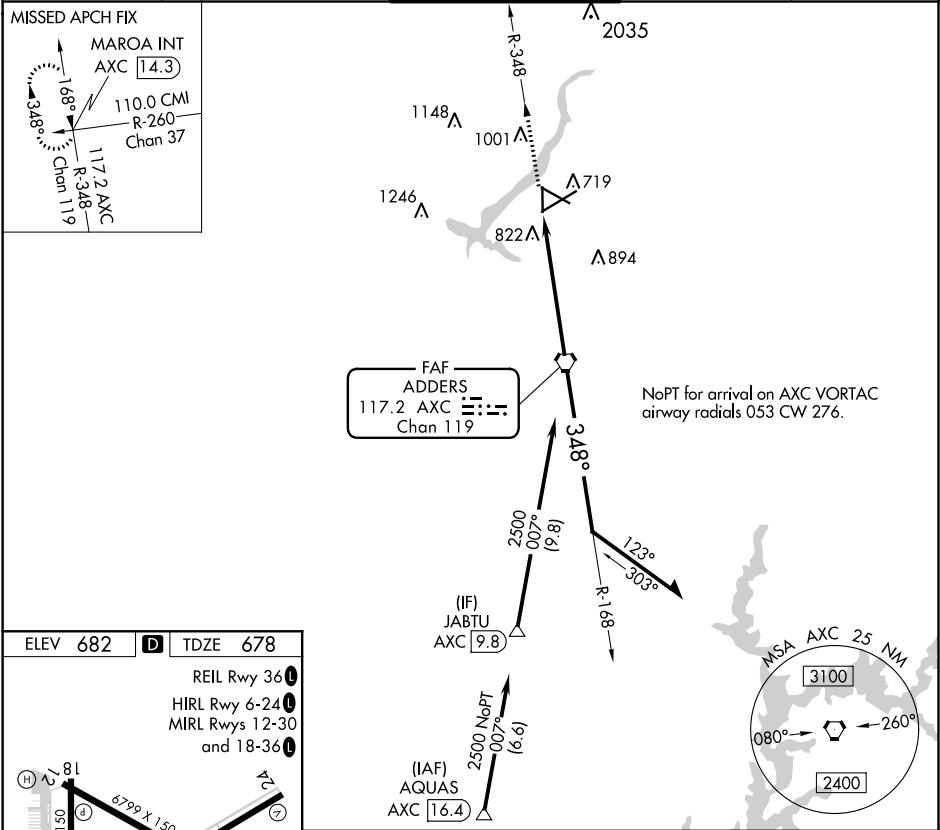


| | | |
|---|------------------------|---|
| VORTAC AXC 117.2 Chan 119 | APP CRS 348° | Rwy Idg 5298 TDZE 678 Apt Elev 682 |
|---|------------------------|---|

VOR RWY 36
DECATUR (DEC)

| | |
|--|--|
| DME required. | MISSED APPROACH: Climb to 3100 on AXC VORTAC R-348 to MAROA INT/AXC 14.3 DME and hold. |
| ▼ Rwy 36 helicopter visibility reduction below ¾ NA. When local altimeter setting not received, use Lincoln altimeter setting and increase all MDA 80 feet, increase S-36 Cat C/D and Circling Cat C/D visibility ¼ SM. VDP NA when using Lincoln altimeter setting. | |

| | | | | |
|-----------------------|--|--|----------------------------------|-------------------------|
| ATIS 126.35 | CHAMPAIGN APP CON ★ 132.85 290.225 | DECATUR TOWER ★ 118.9 (CTAF) 0 291.775 | GND CON 121.75 291.775 | UNICOM 122.95 |
|-----------------------|--|--|----------------------------------|-------------------------|



| | | | | | | |
|------------|-------------|-------------|-------------|--------------|------------|---------------------|
| 3100 | MAROA INT | AXC R-348 | AXC 4.1 | AXC 5.4 | AXC VORTAC | Remain within 10 NM |
| | | | 3.08 TCH 58 | 2500 | 2500 | |
| | | | 1.3 NM | 4.1 NM | | |
| CATEGORY | A | B | C | D | | |
| S-36 | 1160-1 | 482 (500-1) | 1160-1⅓ | 482 (500-1⅓) | | |
| ✶ CIRCLING | 1160-1 | 1240-1 | 1360-2 | 1360-2¼ | | |
| | 478 (500-1) | 558 (600-1) | 678 (700-2) | 678 (700-2¼) | | |

EC-3, 31 DEC 2020 to 28 JAN 2021

EC-3, 31 DEC 2020 to 28 JAN 2021