

WAAS
CH **99616**
W13A

APP CRS
128°

Rwy Idg **7217**
TDZE **592**
Apt Elev **598**

RNAV (GPS) RWY 13

ABRAHAM LINCOLN CAPITAL (SPI)

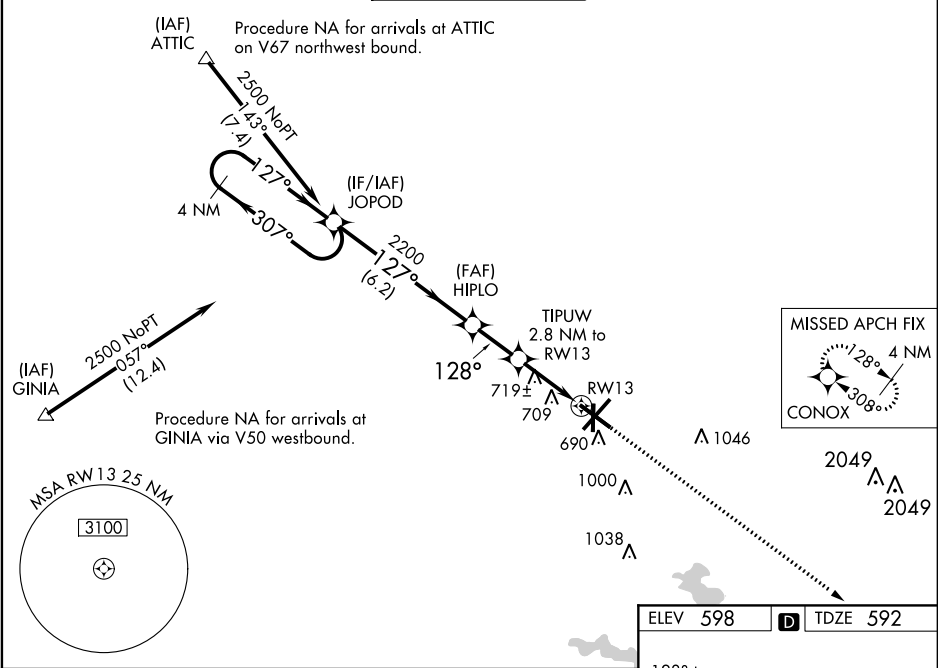
⚠

ASR

For uncompensated Baro-VNAV systems, LNAV/VNAV NA below -16°C (4°F) or above 47°C (116°F). DME/DME RNP-0.3 NA. Visibility reduction by helicopters NA. When local altimeter setting not received, use Lincoln altimeter setting: increase all DA 57 feet and MDA 60 feet, increase LPV and LNAV/VNAV all Cats visibility ¼ SM, and increase LNAV and Circling Cats C and D visibility ¼ SM. Baro-VNAV NA when using Lincoln altimeter setting. VDP NA when using Lincoln altimeter setting.

MISSED APPROACH:
Climb to 3100 direct CONOX and hold.

ATIS 127.65 270.1	SPRINGFIELD APP CON ★ 126.15 323.0	SPRINGFIELD TOWER ★ 121.3 (CTAF) 257.8	GND CON 121.9 348.6	CLNC DEL 121.7	UNICOM 122.95
-----------------------------	--	--	-------------------------------	--------------------------	-------------------------



4 NM Holding Pattern

JOPOD

HIPOLO

TIPUW 2.8 NM to RW13

CONOX

128° to RW13

*1.1 NM to RW13

*1.520

GP 3.00° TCH 50

6.2 NM

2 NM

1.7 NM

1.1 NM

CATEGORY	A	B	C	D
LPV DA	875-1	283 (300-1)		
LNAV/VNAV DA	1011-1½	419 (500-1½)		
LNAV MDA	980-1	388 (400-1)	980-1¼	388 (400-1¼)
CIRCLING	1040-1 442 (500-1)	1100-1 502 (600-1)	1360-2¼ 762 (800-2¼)	1380-2½ 782 (800-2½)

ELEV 598

TDZE 592

128° to RW13

81

5300

4150

800

150

7400

150

36

31

TWR 698

MIRL Rwy 18-36

REIL Rwy 13

HIRL Rwy 4-22 and 13-31