

LOC I-CJF	APP CRS	Rwy Idg	7000
110.15	308°	TDZE	590
		Apt Elev	597

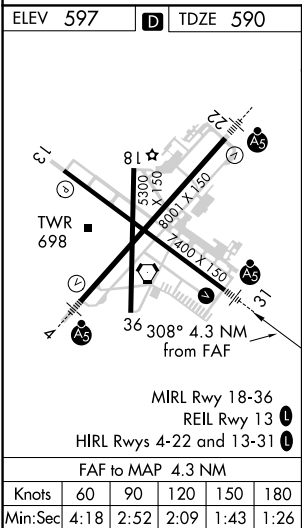
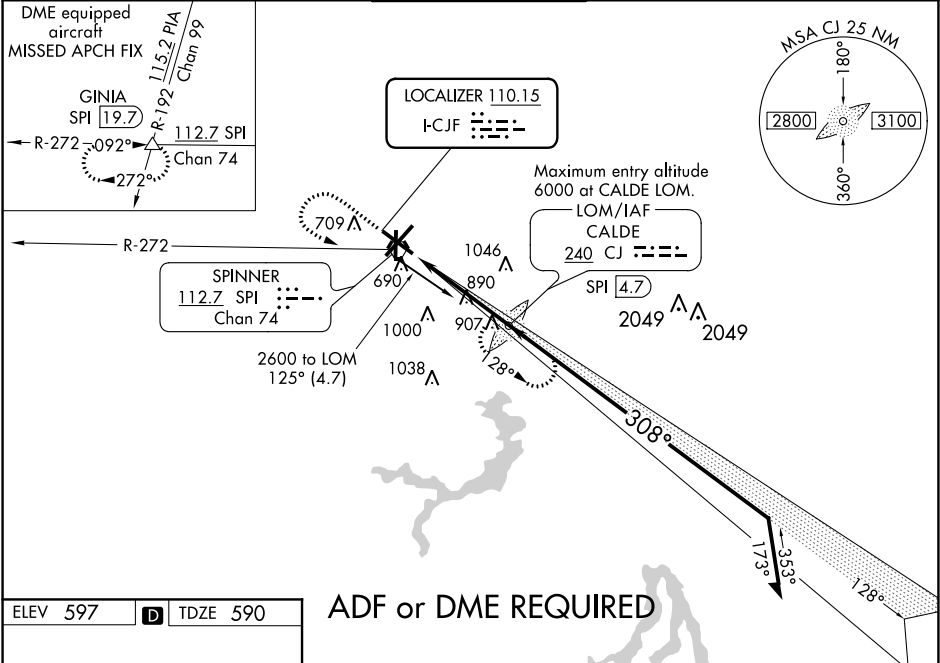
ILS or LOC RWY 31
ABRAHAM LINCOLN CAPITAL (SPI)

ADF or DME REQUIRED.
If local altimeter setting not received use Logan County altimeter setting and increase all DAs/MDAs 60 feet.
For inop MALSR, increase S-ILS-31 Cat E visibility to ¾ and S-LOC-31 Cat E visibility to 2¼.
Autopilot coupled approach NA below 850.

MALSR

MISSED APPROACH: Climb to 1700 then climbing left turn to 3100 direct CALDE LOM and hold. (DME equipped aircraft climb to 1700, then climbing left turn to 3200 via SPI R-272 to GINIA INT/SPI 19.7 DME and hold.)

ATIS	SPRINGFIELD APP CON ★	SPRINGFIELD TOWER ★	GND CON	CLNC DEL	UNICOM
127.65 270.1	126.15 323.0	121.3 (CTAF) 257.8	121.9 348.6	121.7	122.95



EC-3, 31 DEC 2020 to 28 JAN 2021

EC-3, 31 DEC 2020 to 28 JAN 2021