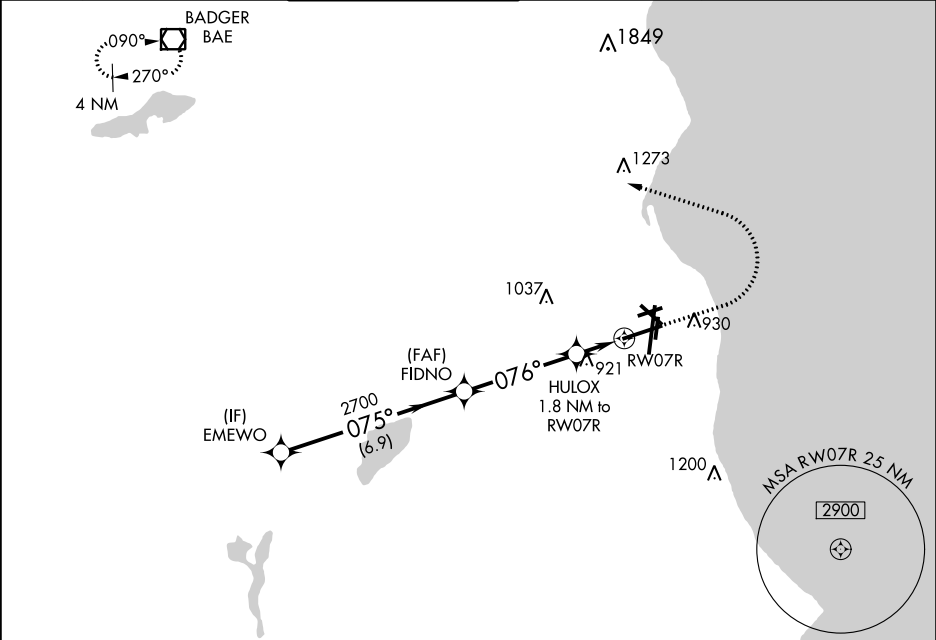


WAAS CH <b>69226</b> <b>W07A</b>	APP CRS <b>076°</b>	Rwy Idg TDZE Apt Elev <b>8012</b> <b>729</b> <b>729</b>
--	------------------------	---

RNAV (GPS) Z RWY 7R

GENERAL MITCHELL INTL (MKE)

For uncompensated Baro-VNAV systems, LNAV/VNAV NA below -20°C (-4°F) or above 54°C (130°F). DME/DME RNP-0.3 NA. # RVR 1800 authorized with use of FD or AP or HUD to DA.			MALSR 	MISSED APPROACH: Climb to 2900 then climbing left turn to 3000 direct BAE VOR/DME and hold.	
D-ATIS <b>126.4</b>	MILWAUKEE APP CON <b>126.5 307.0</b>	MILWAUKEE TOWER <b>124.575 269.05</b>	GND CON <b>121.8 263.125</b>	CLNC DEL <b>120.8</b>	CPDLC



VGSI and RNAV glidepath not coincident (VGSI Angle 3.00/TCH 63).					ELEV 729		D		TDZE 729		
EMEWO					FIDNO		HULOX		*LNAV only.		
2900					2700		1.8 NM to RW07R		*1.2 NM to RW07R		
GP 3.00°					2700		*1340				
TCH 50											
6.9 NM					4.2 NM		0.6 NM		1.2 NM		
CATEGORY		A		B		C		D			
LPV DA #				929/24		200 (200-½)					
LNAV/VNAV DA				1232-1¼		503 (600-1¼)					
LNAV MDA		1180/24		451 (500-½)		1180/45		451 (500-¾)			
CIRCLING		1240-1		511 (600-1)		1240-1½		1360-2			
						511 (600-1½)		631 (700-2)			
TDZ/CL Rwy 1L REIL Rwy 1R, 7L, 13, 25R, 25L and 31 HIRL Rwy 1L-19R and 7R-25L MIRL Rwy 1R-19L, 13-31 and 7L-25R											