

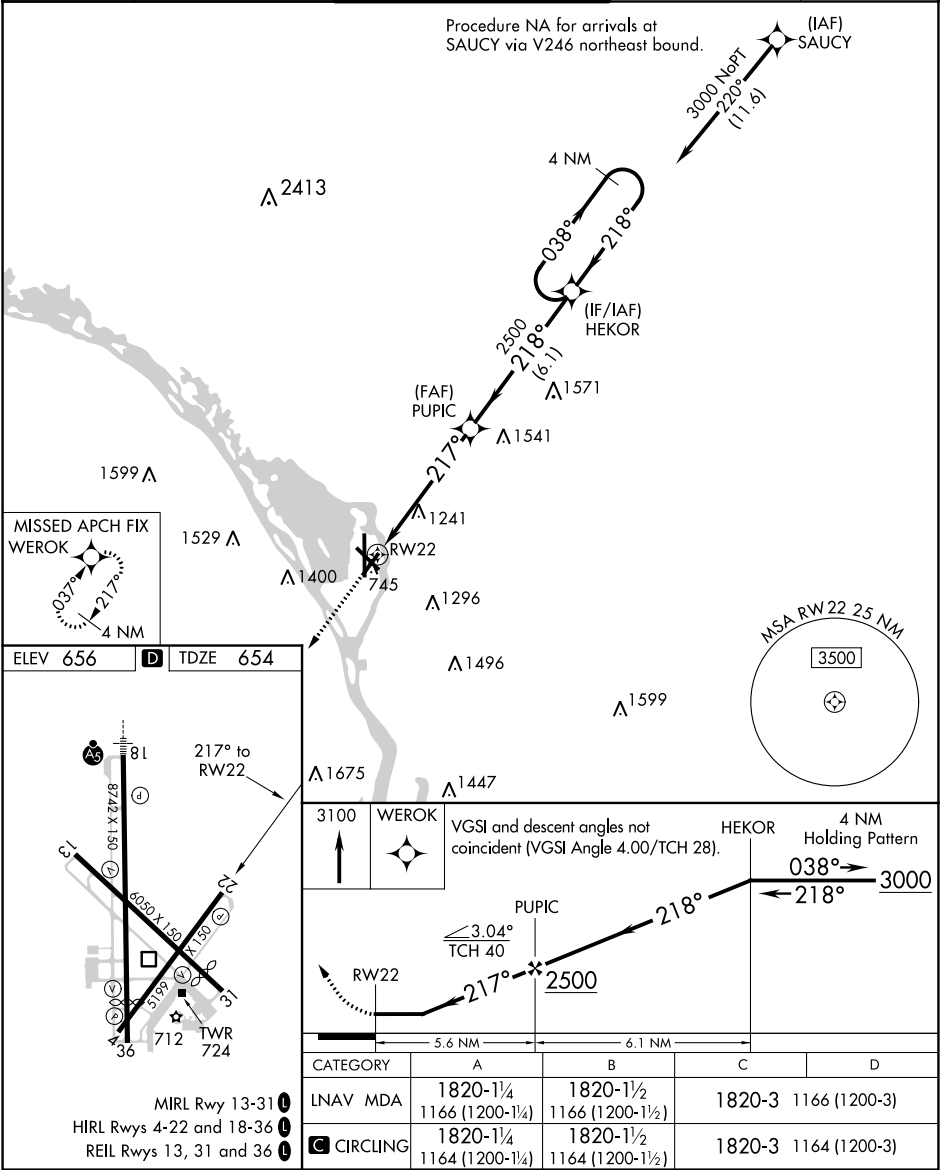
APP CRS	Rwy Idg	5199
217°	TDZE	654
	Apt Elev	656

RNAV (GPS) RWY 22

LA CROSSE RGNL (LSE')

<div><div><div></div><div></div><div></div></div><div>-20°C</div></div>	DME/DME RNP-0.3 NA. When local altimeter setting not received, use Winona altimeter setting and increase all MDA 60 feet. Helicopter visibility reduction below 1 SM NA. Procedure NA at night.	MISSED APPROACH: Climb to 3100 direct WEROK and hold.
---	---	---

ATIS 124.95	MINNEAPOLIS CENTER 128.6 363.0	LA CROSSE TOWER ★ 118.45 (CTAF) 251.075	GND CON 121.8	UNICOM 122.95
----------------	-----------------------------------	--	------------------	------------------



ELEV 656

D

TDZE 654

217° to RW22

87.42 X 150

6050 X 150

712

TWR 724

36

4

13

22

31

36

MIRL Rwy 13-31

HIRL Rws 4-22 and 18-36

REIL Rws 13, 31 and 36

3100

WEROK

VGSI and descent angles not coincident (VGSI Angle 4.00/TCH 28).

HEKOR

4 NM Holding Pattern

038°

218°

3000

PUPIC

3.04°

TCH 40

217°

2500

5.6 NM

6.1 NM

RW22

CATEGORY	A	B	C	D
LNAV MDA	1820-1¼ 1166 (1200-1¼)	1820-1½ 1166 (1200-1½)	1820-3 1166 (1200-3)	
CIRCLING	1820-1¼ 1164 (1200-1¼)	1820-1½ 1164 (1200-1½)	1820-3 1164 (1200-3)	