

LOC I-LSE <b>111.1</b>	APP CRS <b>180°</b>	Rwy ldg <b>8536</b> TDZE <b>653</b> Apt Elev <b>656</b>
---------------------------	------------------------	---

ILS or LOC RWY 18  
LA CROSSE RGNL (LSE)

**RADAR required for procedure entry.**

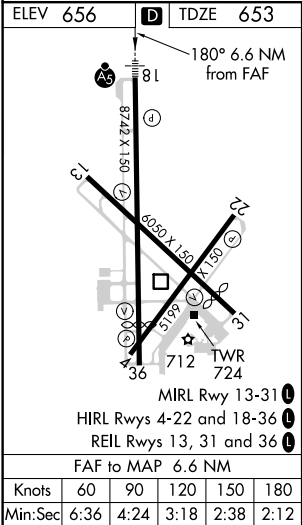
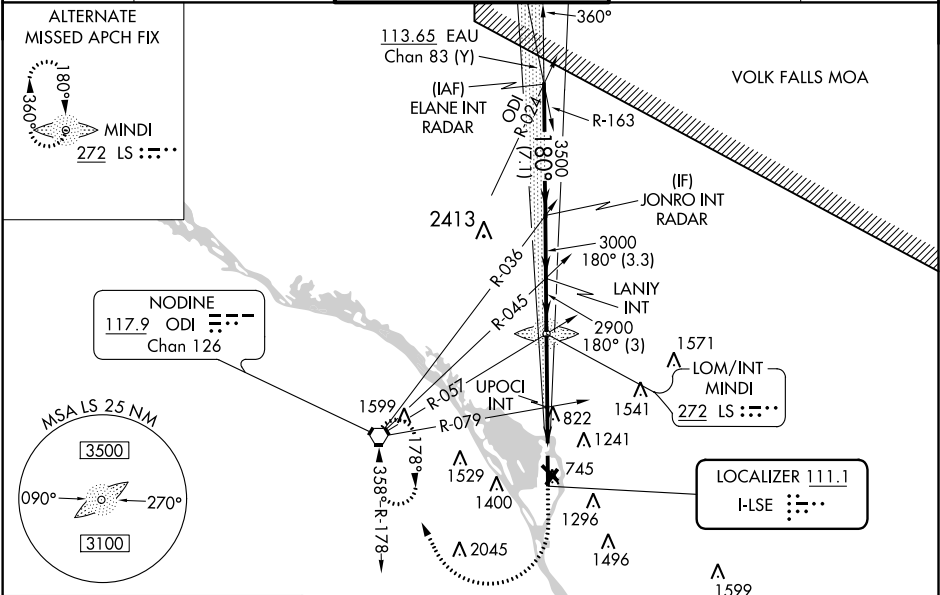
Circling Rwy 22 NA at night. For inop ALS increase UPOCI fix minimums S-LOC Cats C/D visibility to 1 1/2 SM.

-20°C

**MALSR**

**MISSED APPROACH:** Climb to 2400 then climbing right turn to 3400 direct ODI VORTAC and hold.

ATIS <b>124.95</b>	MINNEAPOLIS CENTER <b>128.6 363.0</b>	LA CROSSE TOWER ★ <b>118.45 (CTAF) 251.075</b>	GND CON <b>121.8</b>	UNICOM <b>122.95</b>
-----------------------	--	---	-------------------------	-------------------------



<p>JONRO INT RADAR      LANIY INT      MINDI LOM/INT      UPOCI INT</p> <p>3500      180°      3000      2864      *1600</p> <p>GS 3.00° TCH 55</p> <p>3.3 NM      3 NM      3.7 NM      2.9 NM</p> <p>* LOC only.</p> <p>2400      3400      ODI</p> <table><tr><td>CATEGORY</td><td>A</td><td>B</td><td>C</td><td>D</td></tr><tr><td>S-ILS 18</td><td colspan="4">853-½ 200 (200-½)</td></tr><tr><td>S-LOC 18</td><td colspan="2">1600-¾ 947 (1000-¾)</td><td colspan="2">1600-2 947 (1000-2)</td></tr><tr><td>CIRCLING</td><td colspan="2">1600-1¼ 944 (1000-1¼)</td><td>1760-3 1104 (1200-3)</td><td>1820-3 1164 (1200-3)</td></tr><tr><td colspan="5">UPOCI FIX MINIMUMS (DUAL VOR RECEIVERS REQUIRED)</td></tr><tr><td>S-LOC 18</td><td colspan="2">1140-½ 487 (500-½)</td><td colspan="2">1140-1 487 (500-1)</td></tr><tr><td>CIRCLING</td><td>1140-1 484 (500-1)</td><td>1460-1 804 (900-1)</td><td>1760-3 1104 (1200-1)</td><td>1820-3 1164 (1200-3)</td></tr></table>				CATEGORY	A	B	C	D	S-ILS 18	853-½ 200 (200-½)				S-LOC 18	1600-¾ 947 (1000-¾)		1600-2 947 (1000-2)		CIRCLING	1600-1¼ 944 (1000-1¼)		1760-3 1104 (1200-3)	1820-3 1164 (1200-3)	UPOCI FIX MINIMUMS (DUAL VOR RECEIVERS REQUIRED)					S-LOC 18	1140-½ 487 (500-½)		1140-1 487 (500-1)		CIRCLING	1140-1 484 (500-1)	1460-1 804 (900-1)	1760-3 1104 (1200-1)	1820-3 1164 (1200-3)
CATEGORY	A	B	C	D																																		
S-ILS 18	853-½ 200 (200-½)																																					
S-LOC 18	1600-¾ 947 (1000-¾)		1600-2 947 (1000-2)																																			
CIRCLING	1600-1¼ 944 (1000-1¼)		1760-3 1104 (1200-3)	1820-3 1164 (1200-3)																																		
UPOCI FIX MINIMUMS (DUAL VOR RECEIVERS REQUIRED)																																						
S-LOC 18	1140-½ 487 (500-½)		1140-1 487 (500-1)																																			
CIRCLING	1140-1 484 (500-1)	1460-1 804 (900-1)	1760-3 1104 (1200-1)	1820-3 1164 (1200-3)																																		

EC-3, 31 DEC 2020 to 28 JAN 2021

EC-3, 31 DEC 2020 to 28 JAN 2021