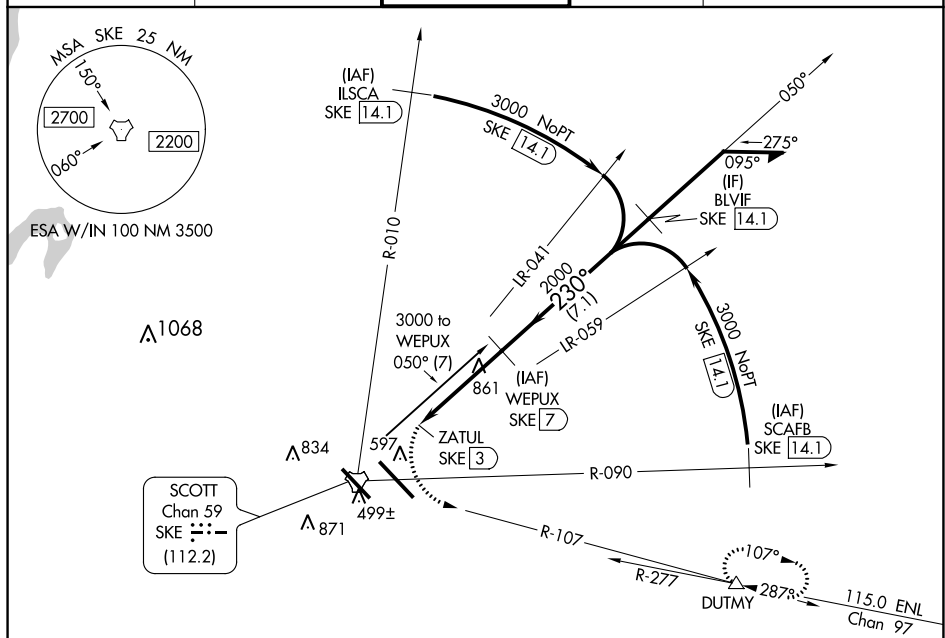


TACAN SKE Chan <b>59</b> (112.2)	APP CRS <b>230°</b>	Rwy ldg TDZE Apt Elev	<b>N/A</b> <b>N/A</b> <b>459</b>
--	------------------------	-----------------------------	--

## TACAN-A

SCOTT AFB/MIDAMERICA (BLV)

<div><div><div></div><div></div></div><div>ASR</div></div>	RADAR required. When local altimeter setting not received, use St Louis Downtown altimeter setting; increase all MDA 60 feet; increase Circling Cat C/D/E visibility ¼ mile.			MISSED APPROACH: Climbing left turn to 3000 on heading 130° and SKE TACAN R-107 to DUTMY/SKE 14.1 DME and hold.		
	ATIS ★ 128.7 256.7	ST LOUIS APP CON 125.2 281.5	SCOTT TOWER 128.25 253.5	GND CON 119.2 275.8	CLNC DEL 119.875 225.4 263.025	



<div>3000</div> <div>hdg 130°</div>		<div>SKE R-107</div>		<div>DUTMY</div> <div>△</div>		<div>WEPUX</div> <div>SKE <u>7</u></div>					
						<div>BLVIF</div> <div>SKE <u>14.1</u></div>					
						Remain within 15 NM					
						3000					
						3000					
						2000					
						230°					
						050°					
						4 NM					
						7.1 NM					
						3000					
						2000					
						230°					
						050°					
						4 NM					
						7.1 NM					
						3000					
						2000					
						230°					
						050°					
						4 NM					
						7.1 NM					
						3000					
						2000					
						230°					
						050°					
						4 NM					
						7.1 NM					
						3000					
						2000					
						230°					
						050°					
						4 NM					
						7.1 NM					
						3000					
						2000					
						230°					
						050°					
						4 NM					
						7.1 NM					
						3000					
						2000					
						230°					
						050°					
						4 NM					
						7.1 NM					
						3000					
						2000					
						230°					
						050°					
						4 NM					
						7.1 NM					
						3000					
						2000					
						230°					
						050°					
						4 NM					
						7.1 NM					
						3000					
						2000					
						230°					
						050°					
						4 NM					
						7.1 NM					
						3000					
						2000					
						230°					
						050°					
						4 NM					
						7.1 NM					
						3000					
						2000					
						230°					
						050°					
						4 NM					
						7.1 NM					
						3000					
						2000					
						230°					
						050°					
						4 NM					
						7.1 NM					
						3000					
						2000					
						230°					
						050°					
						4 NM					
						7.1 NM					
						3000					
						2000					
						230°					
						050°					
						4 NM					
						7.1 NM					
						3000					
						2000					
						230°					
						050°					
						4 NM					
						7.1 NM					
						3000					
						2000					
						230°					
						050°					
						4 NM					
						7.1 NM					
						3000					
						2000					
						230°					
						050°					
						4 NM					
						7.1 NM					
						3000					
						2000					
						230°					
						050°					
						4 NM					
						7.1 NM					
						3000					
						2000					
						230°					
						050°					
						4 NM					
						7.1 NM					
						3000					
						2000					
						230°					
						050°					
						4 NM					
						7.1 NM					
						3000					
						2000					
						230°					
						050°					
						4 NM					
						7.1 NM					
						3000					
						2000					
						230°					
						050°					
						4 NM					
						7.1 NM					
						3000					
						2000					
						230°					
						050°					
						4 NM					
						7.1 NM					
						3000					
						2000					
						230°					
						050°					
						4 NM					
						7.1 NM					
						3000					
						2000					
						230°					
						050°					
						4 NM					
						7.1 NM					
						3000					
						2000					
						230°					
						050°					
						4 NM					
						7.1 NM					
						3000					
						2000					
						230°					
						050°					
						4 NM					
						7.1 NM					
						3000					
						2000					
						230°					
						050°					
						4 NM					
						7.1 NM					
						3000					
						2000					
						230°					
						050°					
						4 NM					
						7.1 NM					
						3000					
						2000					
						230°					
						050°					
						4 NM					
						7.1 NM					
						3000					
						2000					
						230°					
						050°					
						4 NM					
						7.1 NM					
						3000					
						2000					
						230°					
						050°					
						4 NM					
						7.1 NM					
						3000					
						2000					
						230°					
						050°					
						4 NM					
						7.1 NM					
						3000					
						2000					
						230°					
						050°					
						4 NM					
						7.1 NM					
						3000					
						2000					
						230°					
						050°					
						4 NM					
						7.1 NM					
						3000					
						2000					
						230°					
						050°					
						4 NM					
						7.1 NM					
						3000					
						2000					
						230°					
						050°					
						4 NM					
						7.1 NM					
						3000					
						2000					
						230°					
						050°					
						4 NM					
						7.1 NM					
						3000					
						2000					
						230°					
						050°					
						4 NM					
						7.1 NM					
						3000					
						2000					
						230°					
						050°					
						4 NM					
						7.1 NM					
						3000					
						2000					
						230°					
						050°					
						4 NM					
						7.1 NM					
						3000					
						2000					
						230°					
						050°					
						4 NM					
						7.1 NM					
						3000					
						2000					
						230°					
						050°					
						4 NM					
						7.1 NM					
						3000					
						2000					
						230°					
						050°					
						4 NM					
						7.1 NM					
						3000					
						2000					
						230°					
						050°					
						4 NM					
						7.1 NM					
						3000					
						2000					
						230°					
						050°					
						4 NM					
						7.1 NM					
						3000					
						2000					
						230°					
						050°					
						4 NM					
						7.1 NM					
						3000					
						2000					
						230°					
						050°					
						4 NM					
						7.1 NM					
						3000					
						2000					
						230°					
						050°					
						4 NM					
						7.1 NM					
						3000					
						2000					
						230°					
						050°					
						4 NM					
						7.1 NM					
						3000					
						2000					
						230°					
						050°					
						4 NM					
						7.1 NM					
						3000					
						2000					
						230°					
						050°					
						4 NM					
						7.1 NM					
						3000					
						2000					
						230°					
						050°					
						4 NM					
						7.1 NM					
						3000					
						2000					
						230°					
						050°					
						4 NM					
						7.1 NM					
						3000					