

TACAN SKE Chan 59 (112.2)	APP CRS 322°	Rwy Idg TDZE 439 Apt Elev 459
--	------------------------	---

TACAN RWY 32L

SCOTT AFB/MIDAMERICA (BLV)

⚠ NA
ASR

For inoperative ALSF-1, increase S-32L Cat C/D/E
visibility to 1 3⁄8 mile.

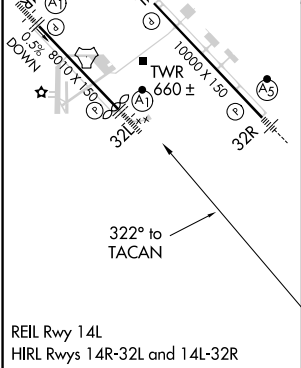
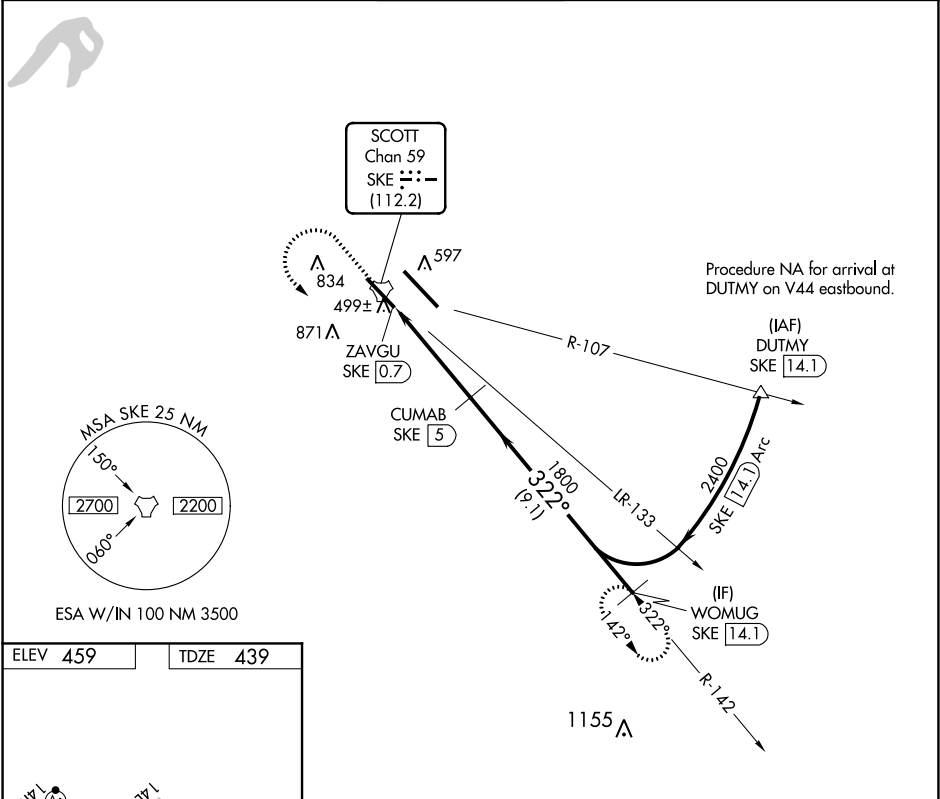
ALSF-1

ⓘ

ⓘ

MISSED APPROACH: Climb to 1500 then
climbing left turn to 2400 on SKE R-142
to WOMUG/14.1 DME and hold.

ATIS ★ 128.7 256.7	ST LOUIS APP CON 125.2 281.5	SCOTT TOWER 128.25 253.5	GND CON 119.2 275.8	CLNC DEL 119.875 225.4 263.025
------------------------------	--	------------------------------------	-------------------------------	--



1500	2400	WOMUG SKE [14.1]			
↑	SKE R-142				
		SKE [2]	CUMAB SKE [5]	WOMUG SKE [14.1]	2400
		ZAVGU SKE [0.7]	2.81° TCH 72		
		1800			
1.3 NM		3 NM	9.1 NM		
CATEGORY	A	B	C	D	E
S-32L	920/24	481 (500-½)	920/50	481 (500-1)	920/60 481 (500-1¼)
CIRCLING	1000-1 541 (600-1)	1080-1 621 (700-1)	1240-2¼ 781 (800-2¼)	1240-2½ 781 (800-2½)	1240-2¾ 781 (800-2¾)

EC-3, 31 DEC 2020 to 28 JAN 2021

EC-3, 31 DEC 2020 to 28 JAN 2021