

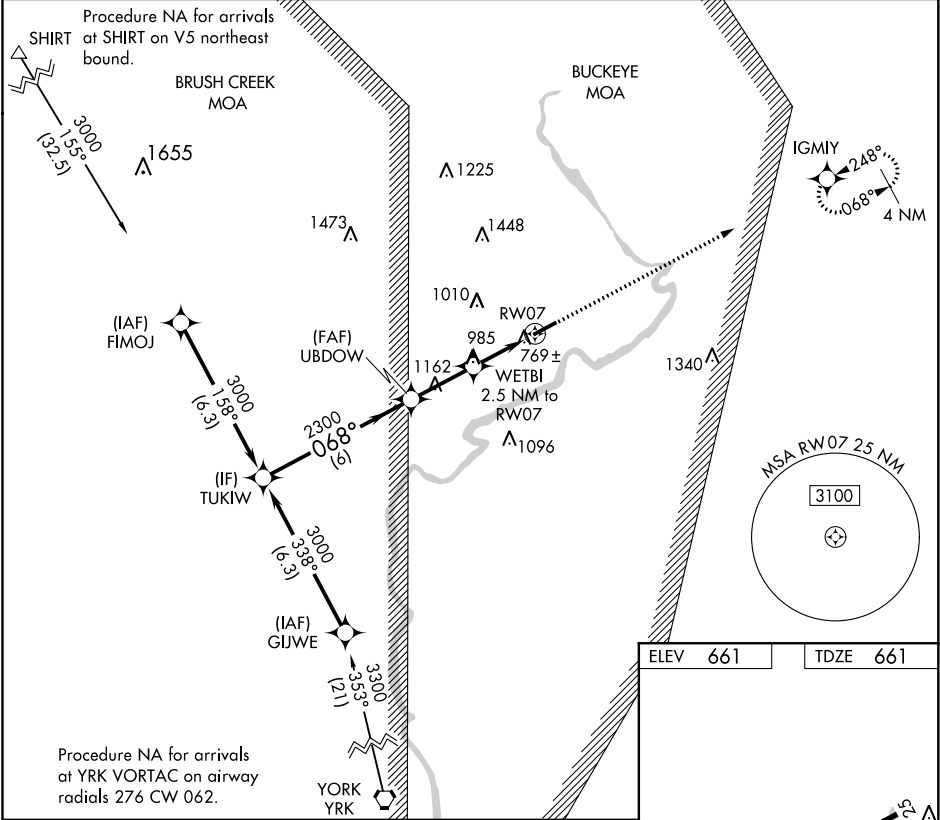
WAAS CH <b>56437</b> <b>W07A</b>	APP CRS <b>068°</b>	Rwy Idg <b>4899</b> TDZE <b>661</b> Apt Elev <b>661</b>
--	------------------------	---

RNAV (GPS) RWY 7

PIKE COUNTY (EOP)

<div><div>▼</div><div>NA</div></div> <div>DME/DME RNP-0.3 NA. Procedure NA at night. Helicopter visibility reduction below 1 SM NA. When local altimeter setting not received, use Chillicothe altimeter setting and increase all MDA 60 feet, increase LP and LNAV visibility Cat C/D and Circling Cat A/B/C ¼ mile.</div>	<div>MISSED APPROACH:</div> <div>Climb to 3000 direct IGMYY and hold.</div>
---	---

AWOS-A <b>118.4</b>	PMH AWOS-3 <b>125.175</b>	INDIANAPOLIS CENTER <b>135.575 290.5</b>	UNICOM <b>123.0 (CTAF) 0</b>
------------------------	------------------------------	---	---------------------------------



Visual Segment - Obstacles.					3000	IGMYY
TUKIW 3000 068°					UBDOW 2300	WETBI 2.5 NM to RW07 1480
6 NM					2.5 NM	2.5 NM
RW07					068° to RW07	
CATEGORY	A	B	C	D		
LP MDA	1020-1				359 (400-1)	
LNAV MDA	1300-1	639 (700-1)	1300-1¾	639 (700-1¾)		
CIRCLING	1440-1 779 (800-1)	1460-1 799 (800-1)	1520-2½ 859 (900-2½)	1640-3 979 (1000-3)		

REIL Rwy 7 and 25 0

MIRL Rwy 7-25 0