

WAAS CH <b>78421</b> <b>W23B</b>	APP CRS <b>230°</b>	Rwy Idg TDZE Apt Elev	<b>10913</b> <b>743</b> <b>744</b>
--	------------------------	-----------------------------	--

RNAV (GPS) RWY 23R

RICKENBACKER INTL (LCK)

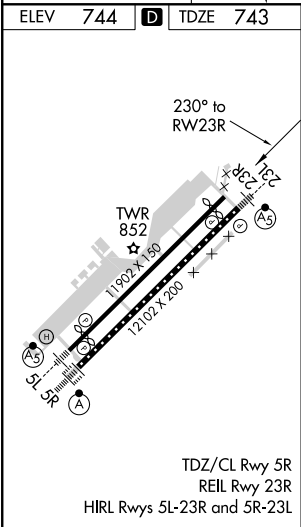
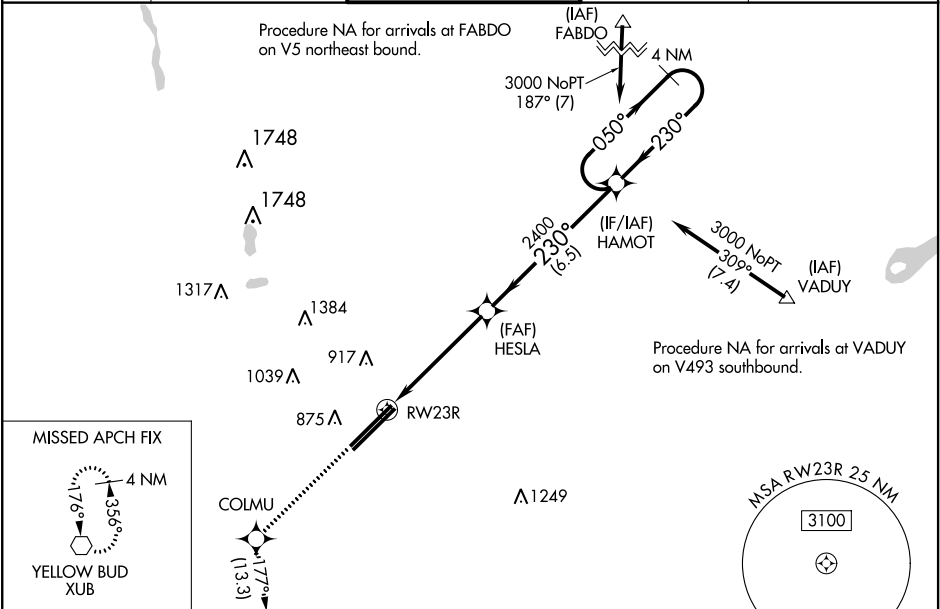
RNP APCH.

▲

Baro-VNAV NA when using John Glenn Columbus Intl altimeter setting. For uncompensated Baro-VNAV systems, LNAV/VNAV NA below -16°C or above 54°C. Circling NA northwest of Rwy 5L-23R. VDP NA with John Glenn Columbus Intl altimeter setting. When local altimeter setting not received, use John Glenn Columbus Intl altimeter setting and increase all DA 36 feet and all MDA 40 feet. Increase LNAV/VNAV visibility ½ mile all Cats.

MISSED APPROACH:  
Climb to 3000 direct COLMU and on track 177° to XUB VOR and hold.

ATIS <b>132.75</b>	COLUMBUS APP CON <b>134.0 279.6</b>	RICK TOWER <b>120.05 348.4</b>	GND CON <b>125.275 275.8</b>	CLNC DEL <b>125.275 275.8</b>
-----------------------	--	-----------------------------------	---------------------------------	----------------------------------



3000	COLMU	XUB	VGSI and RNAV glidepath not coincident (VGSI Angle 3.00/TCH 79).	
↑	✱	tr 177°	4 NM	Holding Pattern
* LNAV only.		HESLA	HAMOT	
* 1.3 NM to RW23R		2400	050° → 3000	
RW23R		2400	← 230°	
1.3		3.7 NM	6.5 NM	
CATEGORY	A	B	C	D
LPV DA	943-¾		200 (200-¾)	
LNAV/VNAV DA	1006-⅞		263 (300-⅞)	
LNAV MDA	1220-1	477 (500-1)	1220-1⅓	477 (500-1⅓)
CIRCLING	1220-1	476 (500-1)	1220-1½ 476 (500-1½)	1300-2 556 (600-2)