

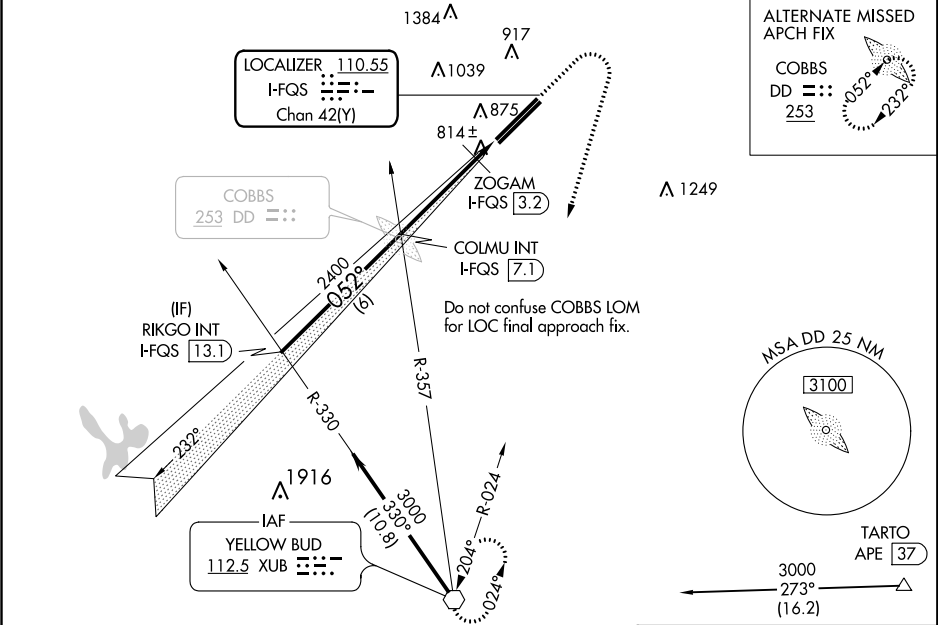
LOC/DME I-FQS <b>110.55</b> Chan <b>42</b> (Y)	APP CRS <b>052°</b>	Rwy Idg <b>11004</b> TDZE <b>744</b> Apt Elev <b>744</b>	ILS or LOC RWY 5L RICKENBACKER INTL (LCK)
--	------------------------	--	--

**⚠** Circling NA northwest of Rwy 5L-23R. When local altimeter setting not received, use John Glenn Columbus Intl altimeter setting and increase all DA 36 Feet and all MDA 40 feet, increase S-LOC 5L visibility Cat C and D ½ mile; increase ZOGAM fix minimums visibility Cat C and D ¾ mile.

MALSR  
AS

MISSED APPROACH: Climb to 1500 then climbing right turn to 3000 direct XUB VOR and hold.

ATIS <b>132.75</b>	COLUMBUS APP CON <b>134.0 279.6</b>	RICK TOWER <b>120.05 348.4</b>	GND CON <b>125.275 275.8</b>	CLNC DEL <b>125.275 275.8</b>
-----------------------	--	-----------------------------------	---------------------------------	----------------------------------



ELEV 744					D TDZE 744				
VGSI and ILS glidepath not coincident (VGSI Angle 3.00/TCH 70).									
RIKGO INT I-FQS 13.1		COLU INT I-FQS 7.1		ZOGAM I-FQS 3.2		I-FQS 2		XUB	
3000		2400		2400		1180		*LOC only.	
GS 3.00° TCH 55		John Glenn Columbus Intl							
† 1220 when using altimeter setting.		6 NM		3.8 NM		1.2 NM			
CATEGORY	A		B		C		D		
S-ILS 5L	944-½		200 (200-½)						
S-LOC 5L	1180-½		436 (500-½)		1180-¾		436 (500-¾)		
CIRCLING	1180-1 436 (500-1)		1200-1 456 (500-1)		1200-1½ 456 (500-1½)		1300-2 556 (600-2)		
ZOGAM FIX MINIMUMS									
S-LOC 5L	1080-½		336 (400-½)						
CIRCLING	1180-1 436 (500-1)		1200-1 456 (500-1)		1200-1½ 456 (500-1½)		1300-2 556 (600-2)		

TWR 852  
1190.2 X 50  
121.02 X 200

052° 5 NM from FAF

TDZ/CL Rwy 5R  
REIL Rwy 23R  
HIRL Rwy 5L-23R and 5R-23L

FAF to MAP 5 NM

Knots	60	90	120	150	180
Min:Sec	5:00	3:20	2:30	2:00	1:40