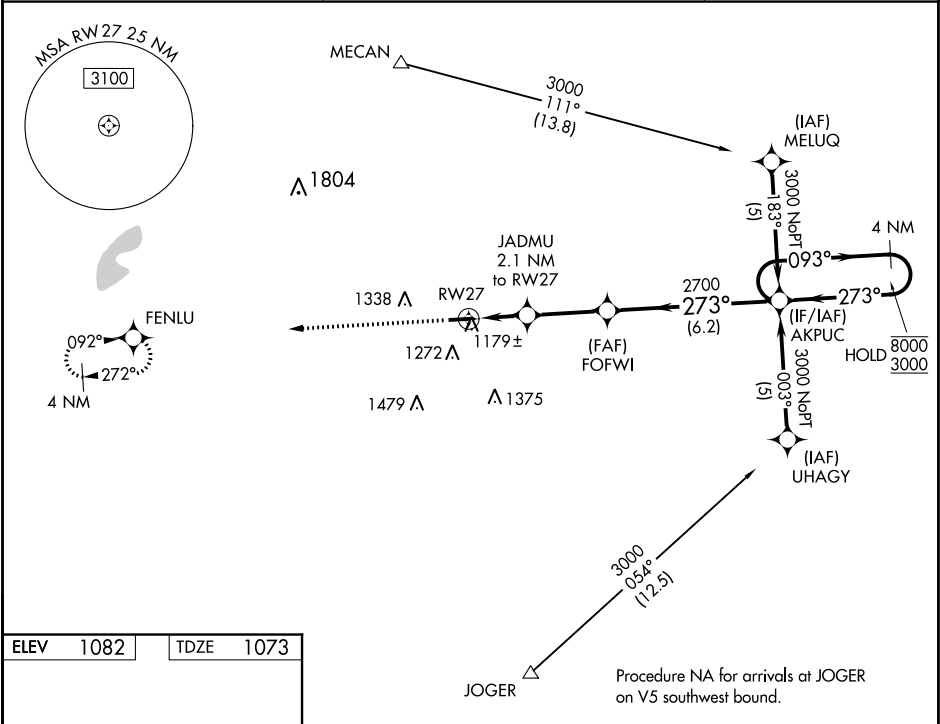


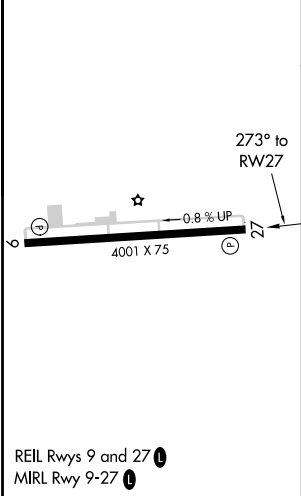
WAAS CH 61009 W27A	APP CRS 273°	Rwy Idg TDZE 1073 Apt Elev 1082
--	------------------------	---

RNAV (GPS) RWY 27
MADISON COUNTY (UYF)

RNP APCH.		MISSED APPROACH: Climb to 3000 direct FENLU and hold.
▼ Rwy 27 helicopter visibility reduction below ¾ SM NA. For uncompensated Baro-VNAV systems, LNAV/VNAV NA below -17°C or above 54°C.		
AWOS-3PT 120.85	COLUMBUS APP CON 118.85 269.275	UNICOM 123.0 (CTAF) 0



ELEV 1082	TDZE 1073
-----------	-----------



3000 FENLU		VGSi and RNAV glidepath not coincident (VGSi Angle 3.00/TCH 30).		4 NM Holding Pattern
*LNAV only.		JADMU 2.1 NM to RW27	FOFWI 2700	AKPUC
*1.4 NM to RW27		*1740	2700	093° 8000
RW27		273°	273°	273° 3000
1.4		0.7	2.9 NM	6.2 NM
CATEGORY	A	B	C	D
LPV DA	1400-1¼ 327 (400-1¼)			
LNAV/VNAV DA	1449-1½ 376 (400-1½)			
LNAV MDA	1540-1	467 (500-1)	1540-1¾ 467 (500-1¾)	1540-1½ 467 (500-1½)
CIRCLING	1600-1 518 (600-1)	1640-1 558 (600-1)	1640-1½ 558 (600-1½)	1640-2 558 (600-2)

EC-2, 31 DEC 2020 to 28 JAN 2021

EC-2, 31 DEC 2020 to 28 JAN 2021