

WAAS CH <b>53703</b> <b>W19A</b>	APP CRS <b>190°</b>	Rwy Idg <b>5002</b> TDZE <b>822</b> Apt Elev <b>822</b>
--	------------------------	---

RNAV (GPS) RWY 19  
INDY SOUTH GREENWOOD (HFY)

RNP APCH.

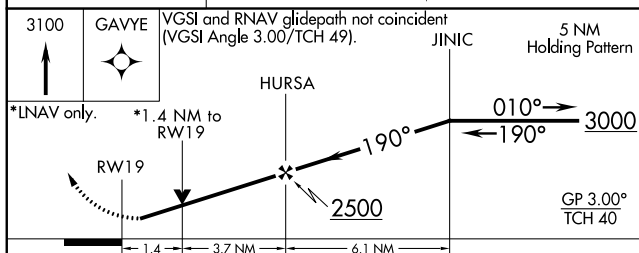
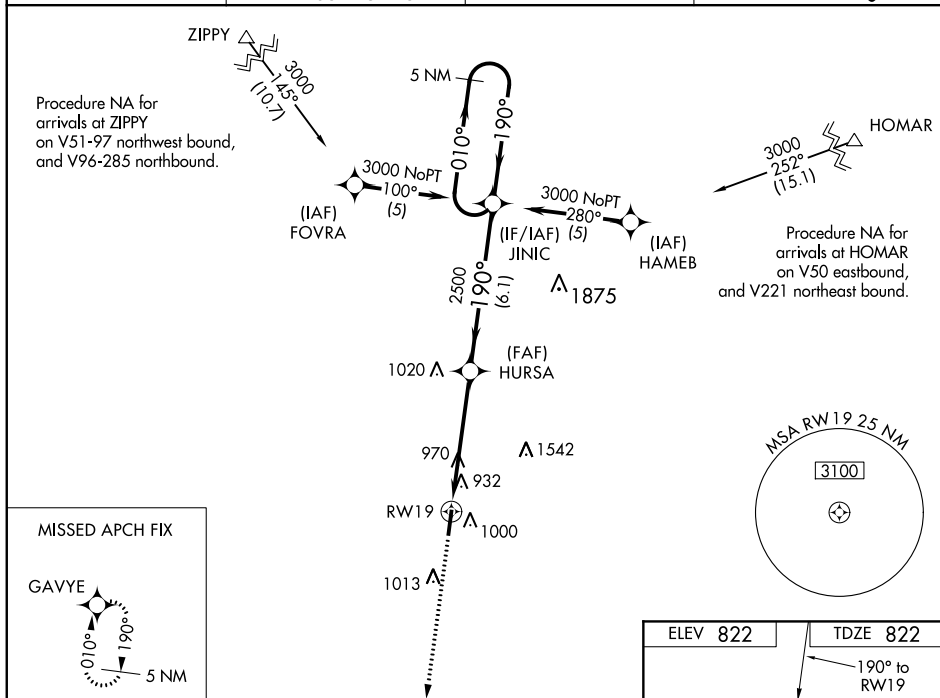
**T** For uncompensated Baro-VNAV systems, LNAV/VNAV NA below  
**A** NA -16°C or above 54°C. Baro-VNAV and VDP NA  
 when using Indianapolis Intl altimeter setting. Rwy 19 helicopter  
 visibility reduction below  $\frac{3}{4}$  SM NA.

ODALS



**MISSED APPROACH:**  
Climb to 3100 direct  
GAVYE and hold.

AWOS-3P <b>118.525</b>	INDIANAPOLIS APP CON <b>124.95 317.8</b>	GCO <b>121.725</b>	UNICOM <b>123.0 (CTAF) 0</b>
---------------------------	---	-----------------------	---------------------------------



CATEGORY	A	B	C	D
LPV DA	1130-1 308 (400-1)			NA
RNAV/ VNAV DA	1299-1 <sup>3</sup> / <sub>4</sub> 477 (500-1 <sup>3</sup> / <sub>4</sub> )			NA
RNAV MDA	1300-1 478 (500-1)		1300-1 <sup>3</sup> / <sub>8</sub> 478 (500-1 <sup>3</sup> / <sub>8</sub> )	NA
<b>C</b> CIRCLING	1360-1 538 (600-1)	1380-1 558 (600-1)	1380-1 <sup>1</sup> / <sub>2</sub> 558 (600-1 <sup>1</sup> / <sub>2</sub> )	NA

