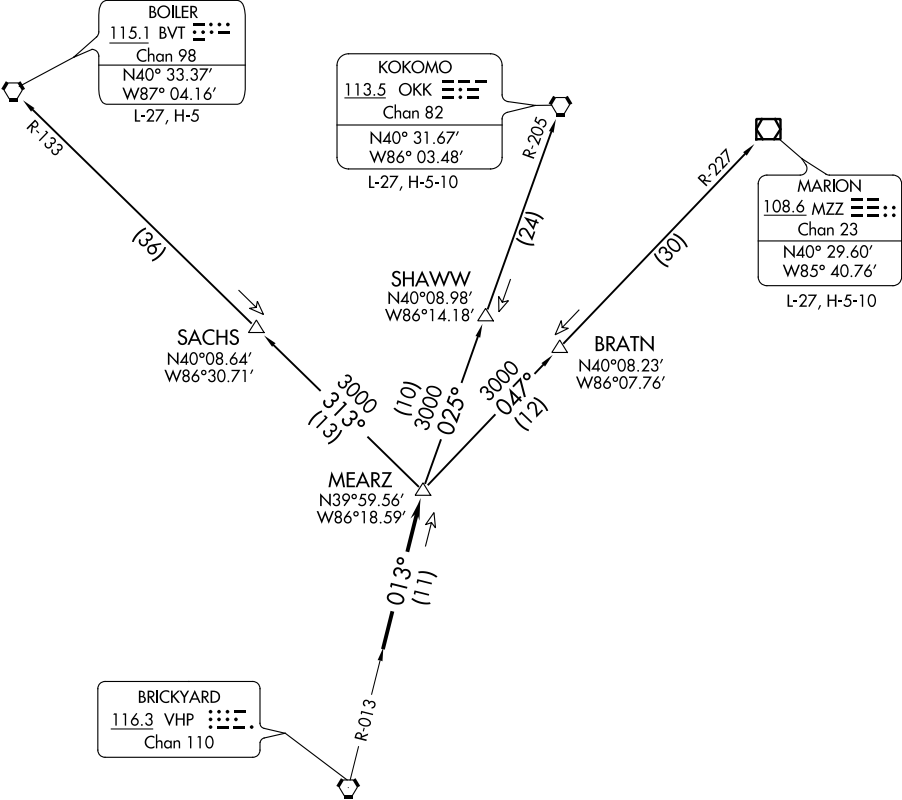


TOP ALTITUDE:  
ASSIGNED BY ATC

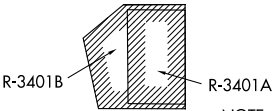
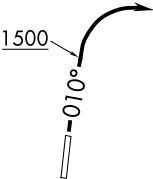
AWOS-3P  
118.525  
INDIANAPOLIS DEP CON  
124.95 317.8



TAKEOFF MINIMUMS  
Rwy 1, 19: Standard.

- NOTE: RADAR required.
- NOTE: Select appropriate localizer/DME frequency/channel prior to departure.
- NOTE: Turbojets accelerate to 250K until reaching 10000, if unable advise ATC.
- NOTE: Assigned to aircraft with a requested altitude of 11000 or above.

(NARRATIVE ON FOLLOWING PAGE)



NOTE: Chart not to scale.