

(MAREO5.MAREO) 20086  
MAREO FIVE DEPARTURE

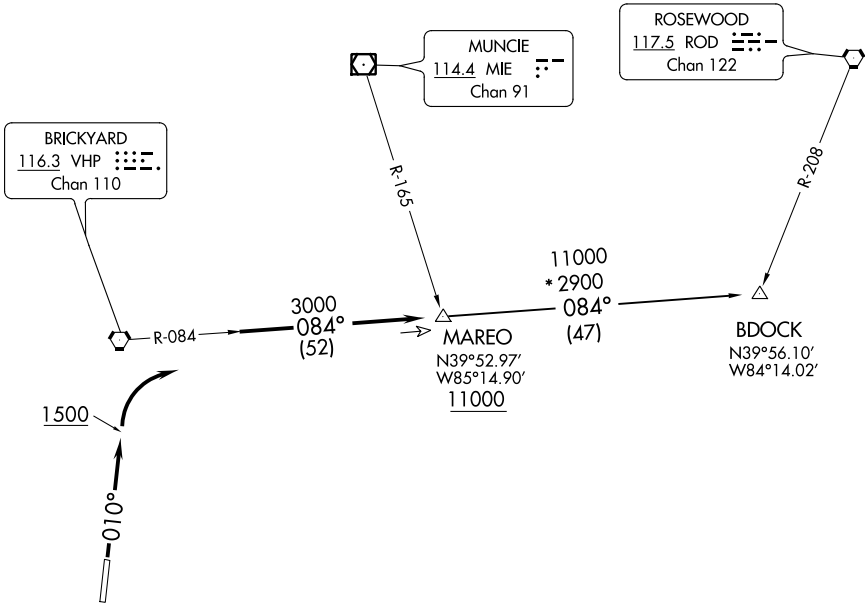
AL-6614 (FAA)

INDY SOUTH GREENWOOD (HF'Y)  
INDIANAPOLIS, INDIANA

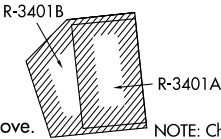
AWOS-3P  
118.525  
INDIANAPOLIS DEP CON  
124.95 317.8

TOP ALTITUDE:  
ASSIGNED BY ATC

TAKEOFF MINIMUMS:  
Rwy 1, 19: Standard.



- NOTE: RADAR required.  
NOTE: Select appropriate localizer/DME frequency/channel prior to departure.  
NOTE: Turbojets accelerate to 250K until reaching 10000, if unable advise ATC.  
NOTE: Assigned to aircraft with a requested altitude of 11000 or above.



NOTE: Chart not to scale.

DEPARTURE ROUTE DESCRIPTION

TAKEOFF RWY 1: Climb heading 010° to 1500 before turning right. Then on assigned heading to assigned altitude. Thence....

DEPARTING ALL OTHER AUTHORIZED RUNWAYS: Climb on assigned heading to assigned altitude. Thence....

....expect RADAR vectors to join VHP R-084 to MAREO INT then via transition or assigned route. Expect clearance to requested altitude ten minutes after departure.

BDOCK TRANSITION (MAREO5.BDOCK): From over MAREO INT via VHP R-084 to BDOCK INT.