

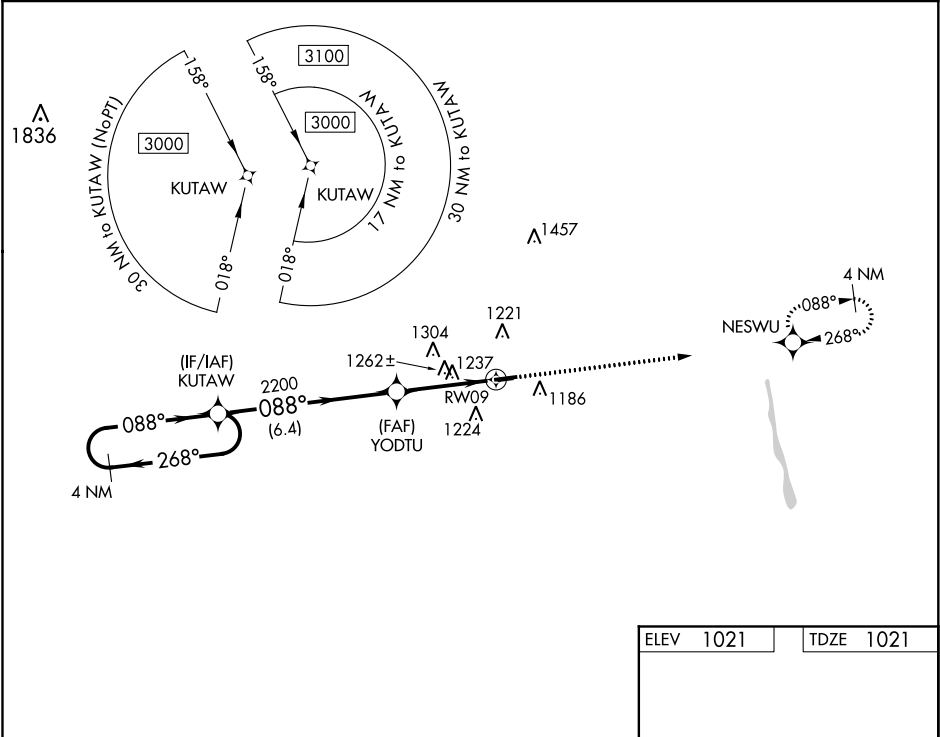
WAAS CH 72827 W09A	APP CRS 088°	Rwy Idg TDZE 1021 Apt Elev 1021	4218
--	------------------------	---	-------------

RNAV (GPS) RWY 9
UNION COUNTY (MRT)

⚠ Night landing: Rwy 27 NA. Helicopter visibility reduction below $\frac{3}{4}$ SM NA. DME/DME RNP-0.3 NA. When local altimeter setting not received, use John Glenn Columbus Intl altimeter setting and increase all MDA 100 feet, LP Cats C and D visibility to $1\frac{1}{2}$ miles, LNAV Cats C and D and Circling Cat C visibility to $1\frac{1}{2}$ miles.

⚠ MISSED APPROACH: Climb to 3000 direct NESWU and hold.

AWOS-3 119.275	COLUMBUS APP CON 125.95 317.775	UNICOM 122.8 (CTAF) 0
--------------------------	---	---------------------------------



4 NM Holding Pattern

VGSI and descent angles not coincident (VGSI Angle 3.00/TCH 25).

3000 NESWU

KUTAW YODTU RW09

3000 268° 088° 088° 3.00° TCH 40 2200

6.4 NM 3.6 NM

CATEGORY	A	B	C	D
LP MDA	1500-1	479 (500-1)	1500-1 $\frac{3}{8}$	479 (500-1 $\frac{3}{8}$)
LNAV MDA	1520-1	499 (500-1)	1520-1 $\frac{3}{8}$	499 (500-1 $\frac{3}{8}$)
CIRCLING	1520-1 499 (500-1)	1540-1 519 (600-1)	1540-1 $\frac{1}{2}$ 519 (600-1 $\frac{1}{2}$)	1580-2 559 (600-2)

ELEV 1021 TDZE 1021

MIRL Rwy 9-27 0

REIL Rlys 9 and 27 0

4218 X 75 2702 X 81 0.6% UP 0.8% UP 1055± 0.6% UP 0.8% UP 088° to RW09

EC-2, 31 DEC 2020 to 28 JAN 2021

EC-2, 31 DEC 2020 to 28 JAN 2021