

19003

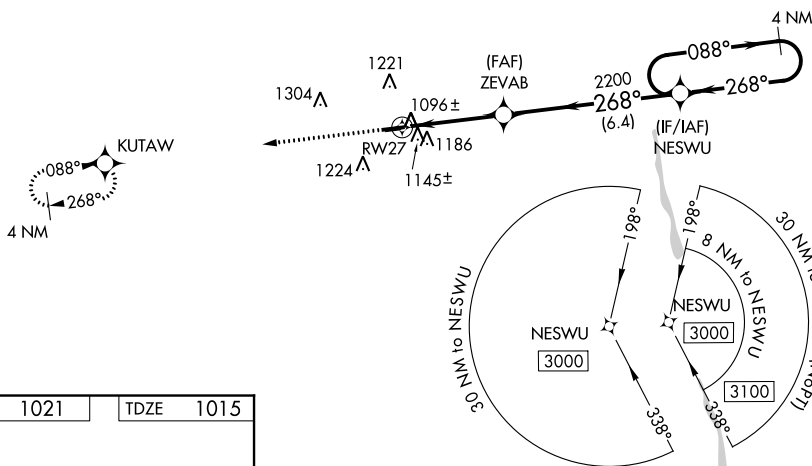
WAAS CH 50327 W27A	APP CRS 268°	Rwy Idg 4095 TDZE 1015 Apt Elev 1021
----------------------------------------	------------------------	-----------------------------------------------------------------

RNAV (GPS) RWY 27
UNION COUNTY (MRT)

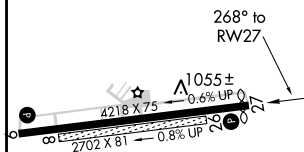
V Night landing: Rwy 27 NA. DME/DME RNP-0.3 NA. Helicopter visibility reduction
A below 1 SM NA. When local altimeter setting not received, use John Glenn Columbus
Intl altimeter setting and increase all MDA 100 feet, LP and LNAV Cat C and D
visibility to 1½ miles and Circling Cat C visibility to 1¾ miles.

MISSED APPROACH: Climb to 3000 direct KUTAW and hold.

AWOS-3 119.275	COLUMBUS APP CON 125.95 317.775	UNICOM 122.8 (CTAF) ①
--------------------------	-------------------------------------------	---------------------------------



ELEV	1021	TDZE	1015
------	------	------	------

MIRL Rwy 9-27 **L**REIL Rwys 9 and 27 **L**

MARYSVILLE, OHIO

Orig-B 31MAR16

40°13'N-83°21'W

UNION COUNTY(MRT)

RNAV (GPS) RWY 27

EC-2, 31 DEC 2020 to 28 JAN 2021