

WAAS
CH **40306**
W36A

APP CRS
004°

Rwy Idg **5002**
TDZE **829**
Apt Elev **842**

RNAV (GPS) RWY 36

PUTNAM COUNTY RGNL (GPC)

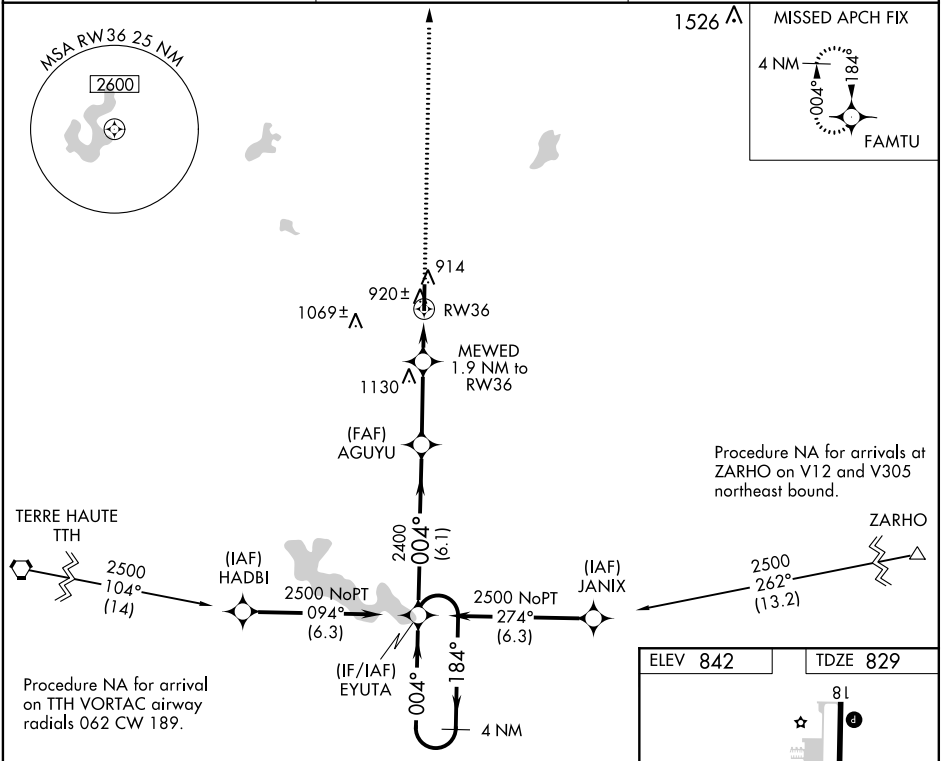
▼ For uncompensated Baro-VNAV systems, LNAV/VNAV NA below -16°C (4°F) or above 54°C (130°F). DME/DME RNP-0.3 NA.

MISSED APPROACH:
Climb to 2500 direct
FAMTU and hold.

AWOS-3PT
118.125

INDIANAPOLIS APP CON
119.05 317.8

UNICOM
122.8 (CTAF) 0



4 NM Holding Pattern EYUTA

GP 3.00° TCH 30

AGUYU

MEWED 1.9 NM to RW36

*1.1 NM to RW36

*1440

2400

2500

184°

004°

004°

184°

004° to RW36

FAMTU

*LNAV only.

81

5002 X 100

0.6% Up

36

MIRL Rwy 18-36 0

REIL Rwy 18

CATEGORY	A	B	C	D
LPV DA		1079-7/8	250 (300-7/8)	
LNAV/VNAV DA		1116-1	287 (300-1)	
LNAV MDA		1180-1	351 (400-1)	
CIRCLING	1280-1 438 (500-1)	1400-1 558 (600-1)	1480-1 3/4 638 (700-1 3/4)	1480-2 638 (700-2)